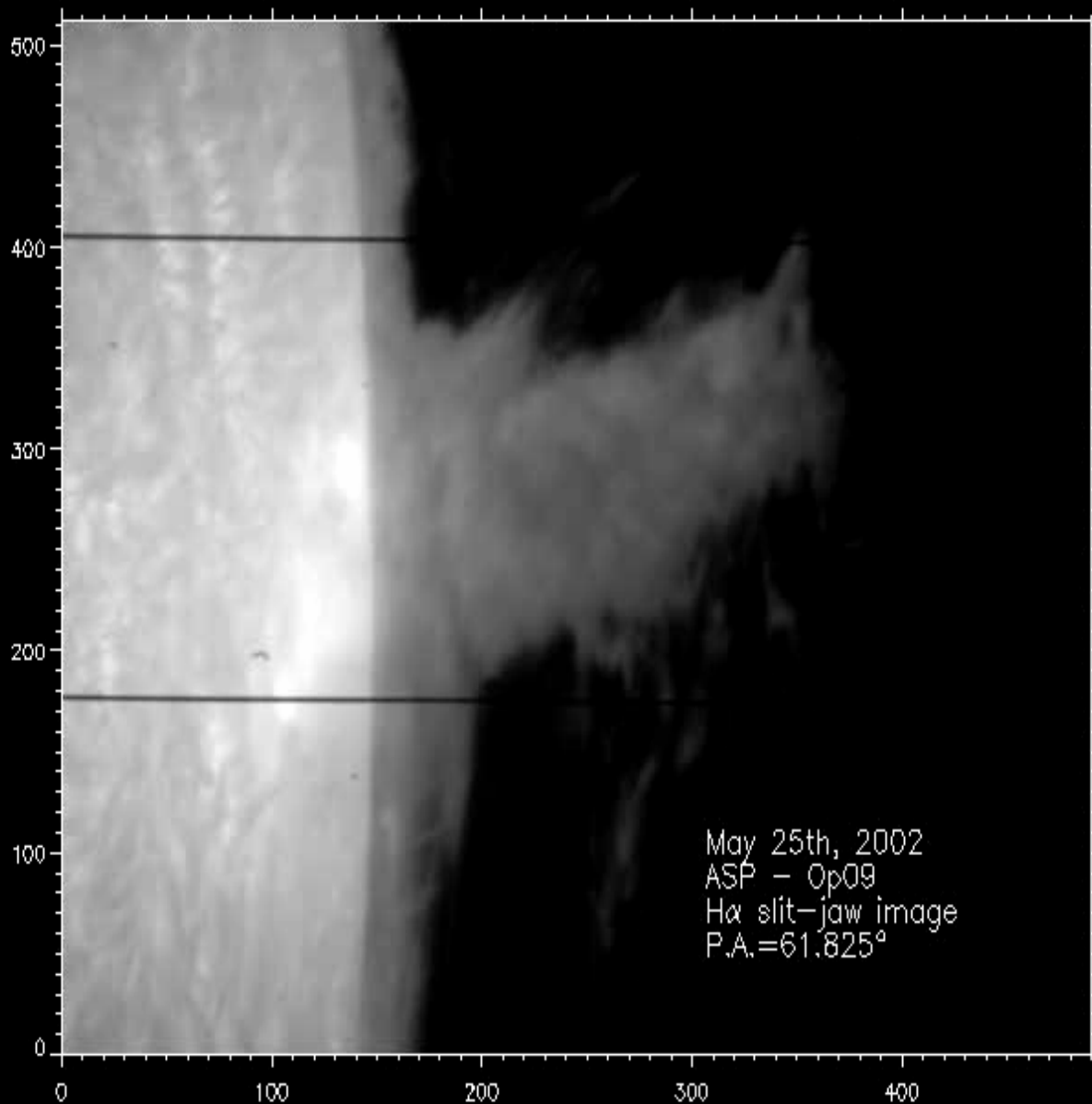
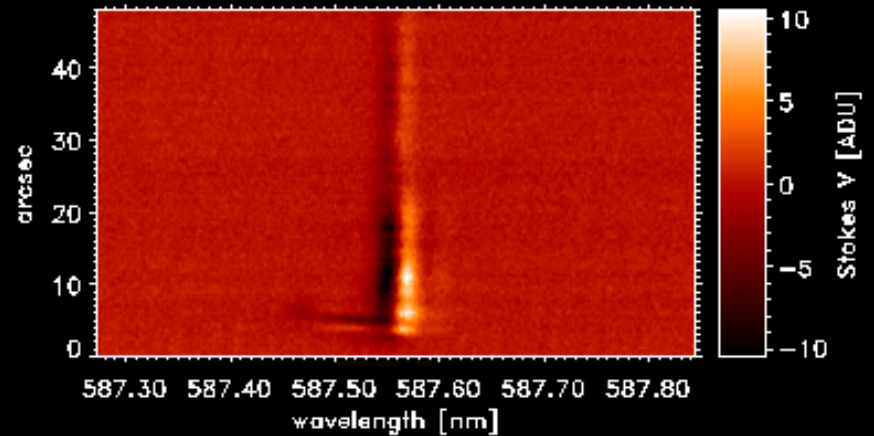
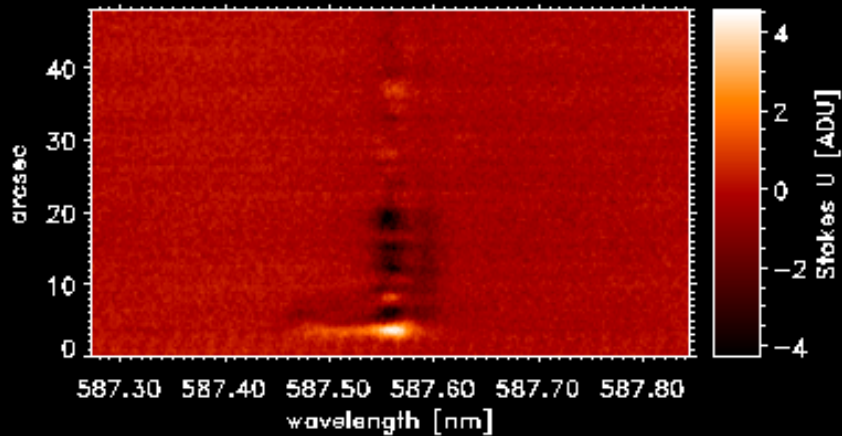
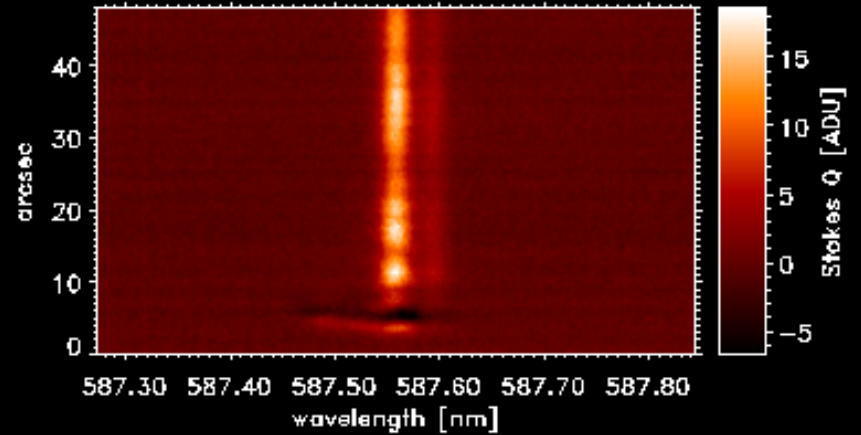
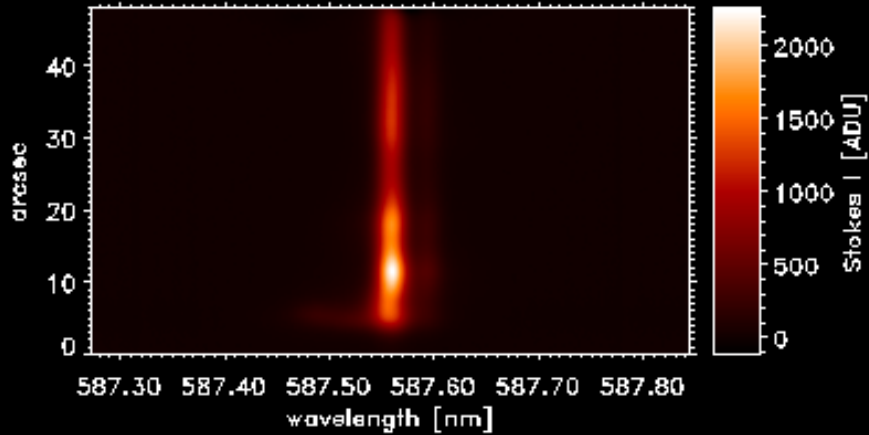




From polarimetry to magnetic fields in prominences

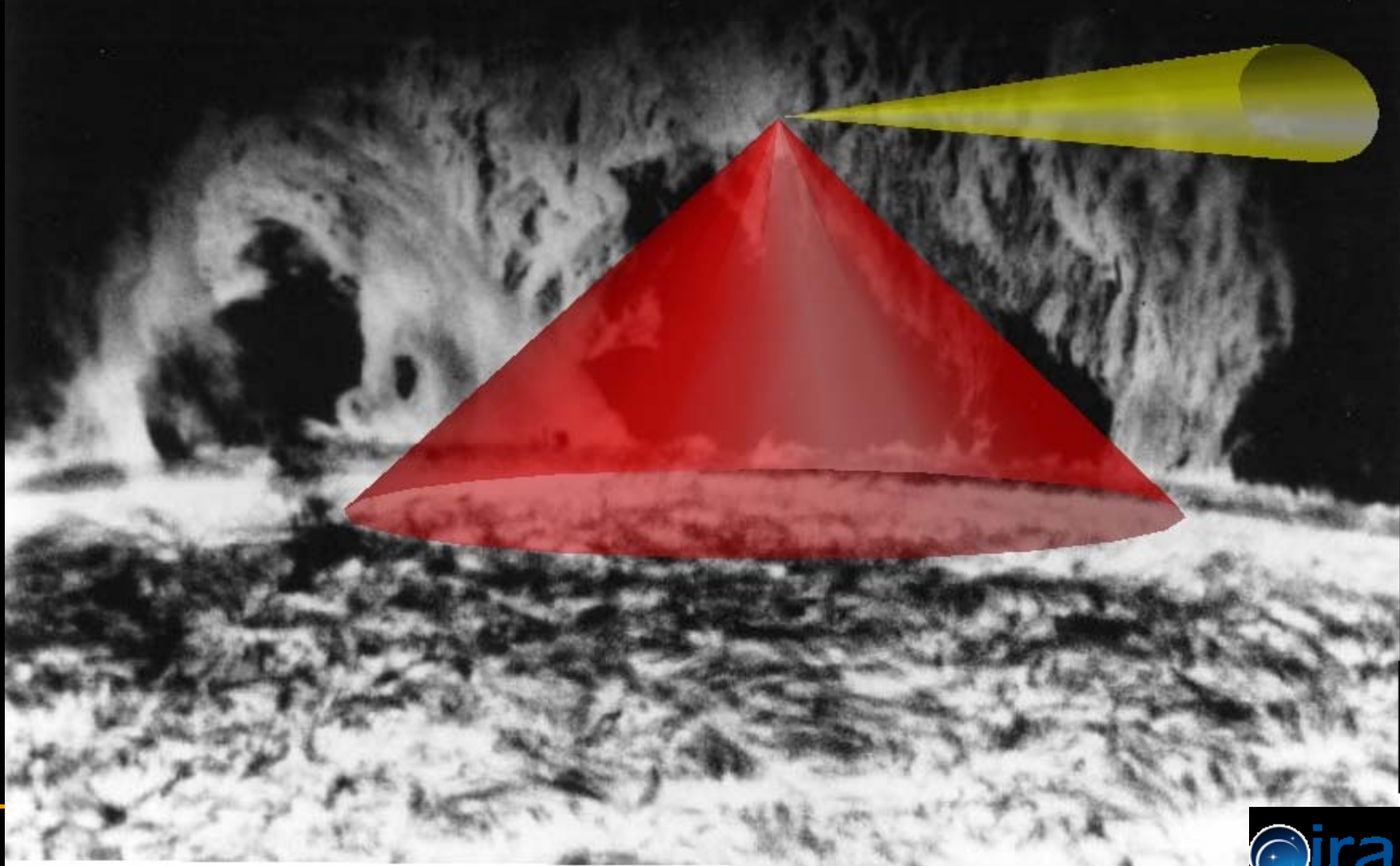
A. López Ariste

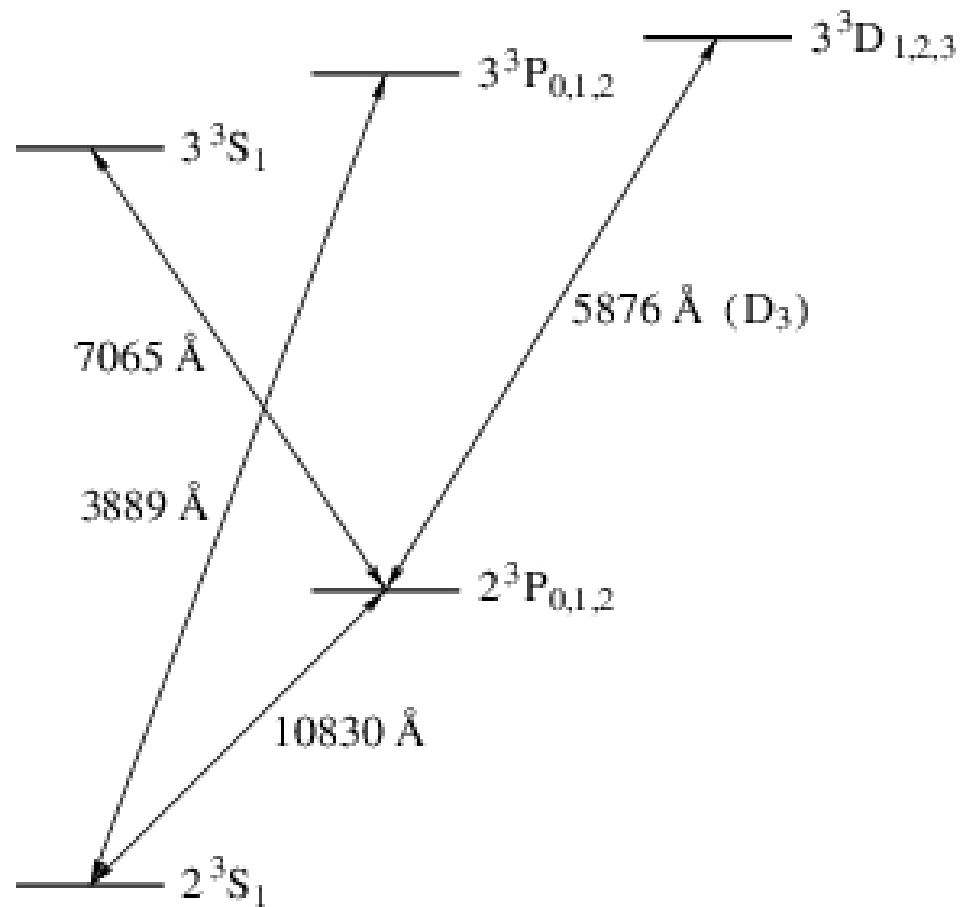


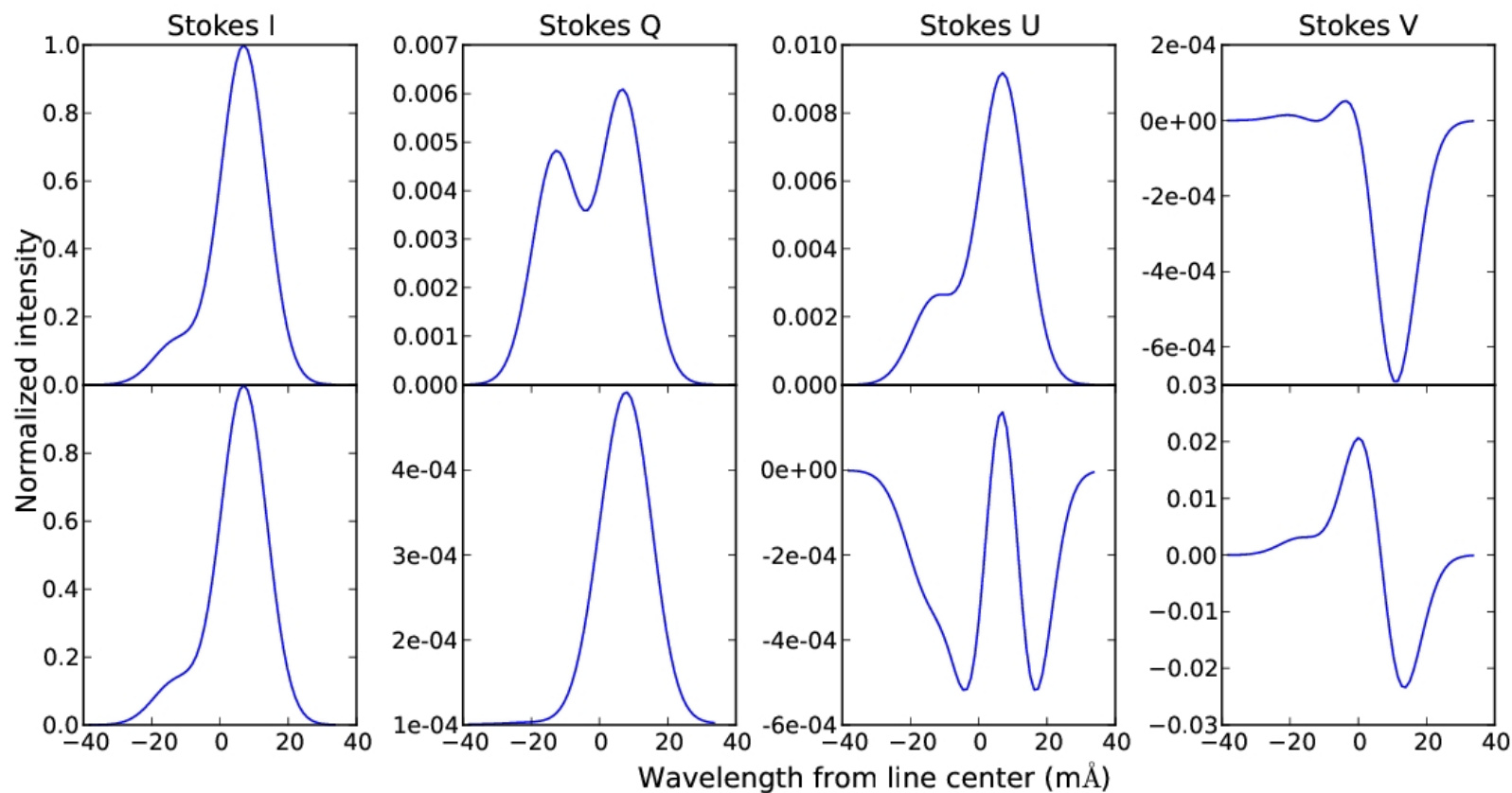




Hanle effect used to measure fields in prominences

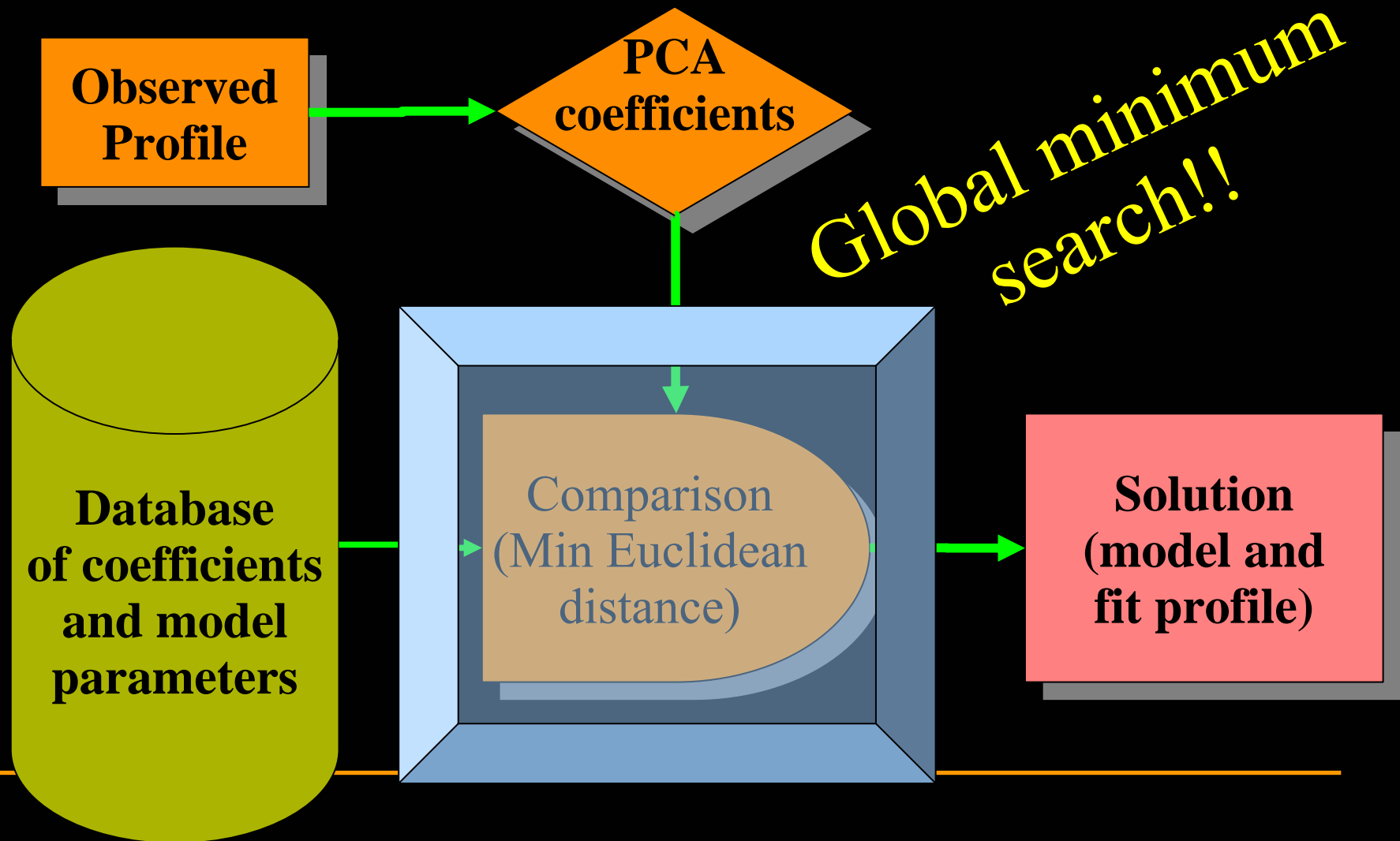


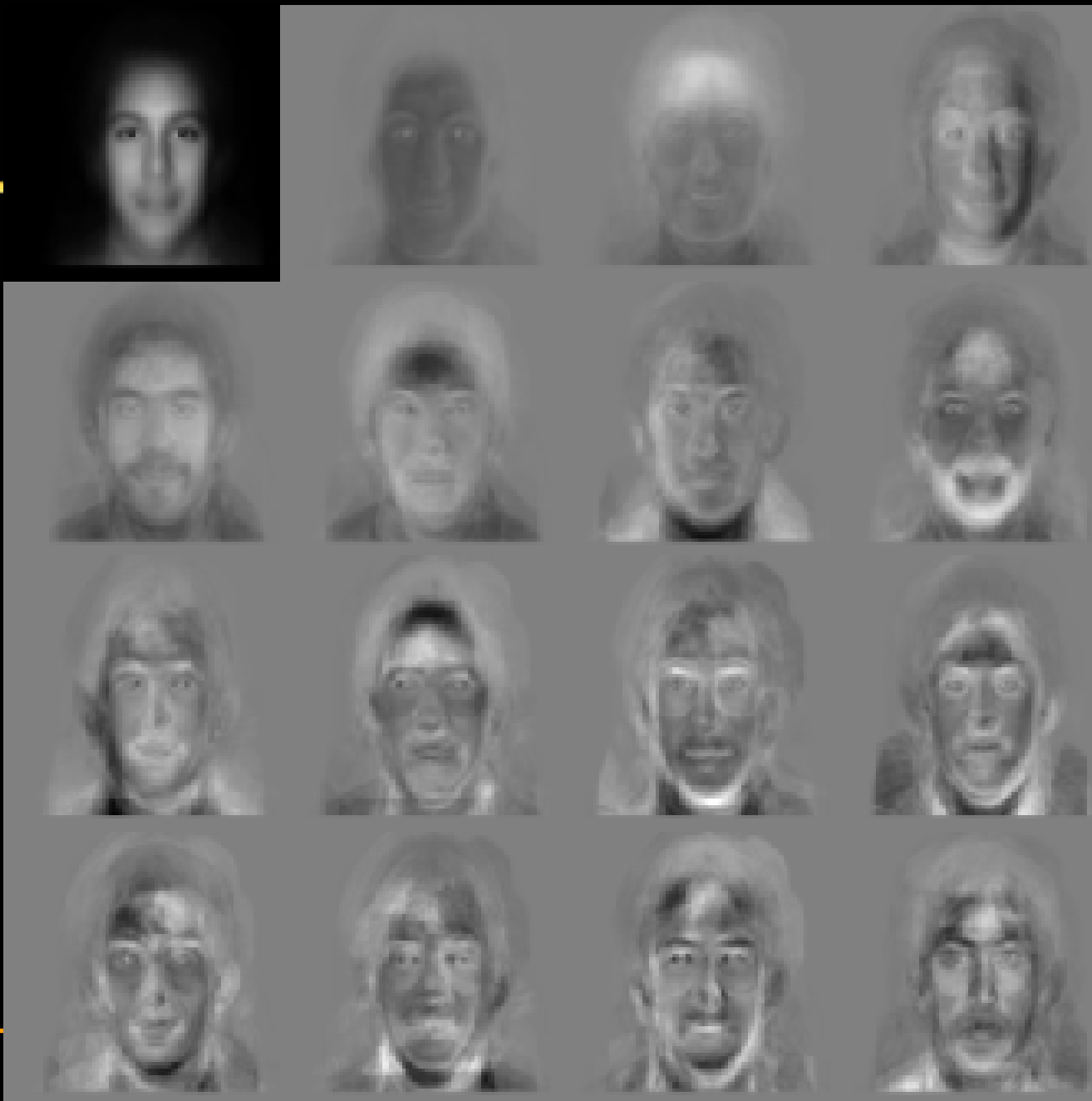


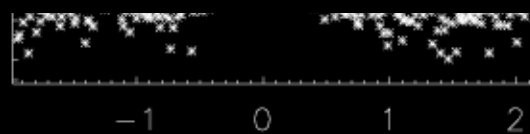
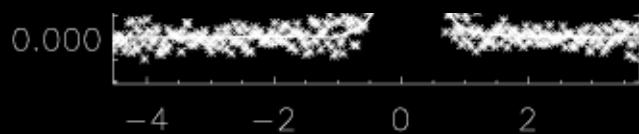
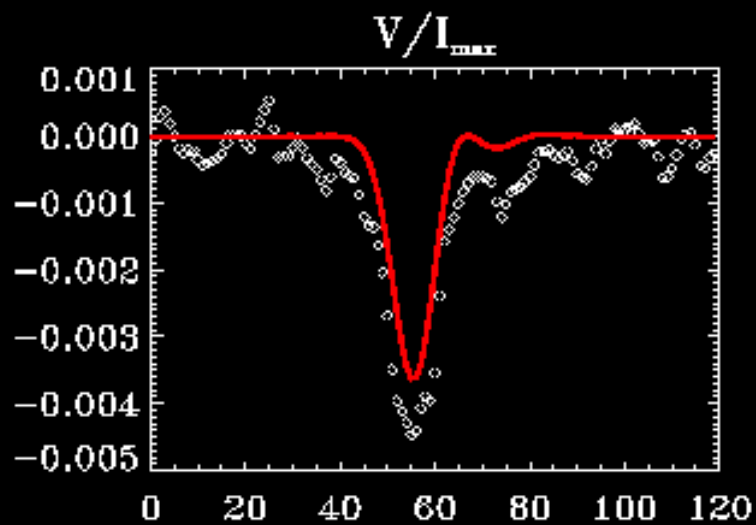
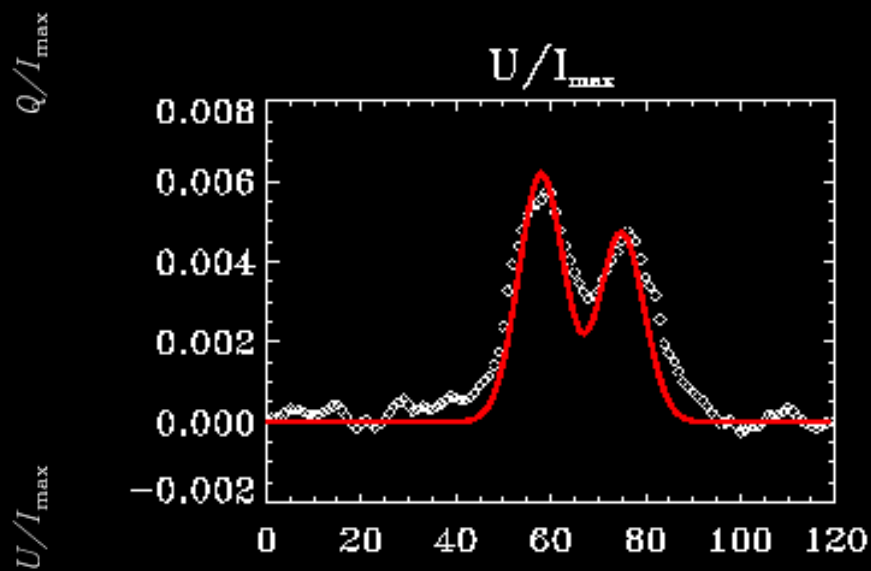
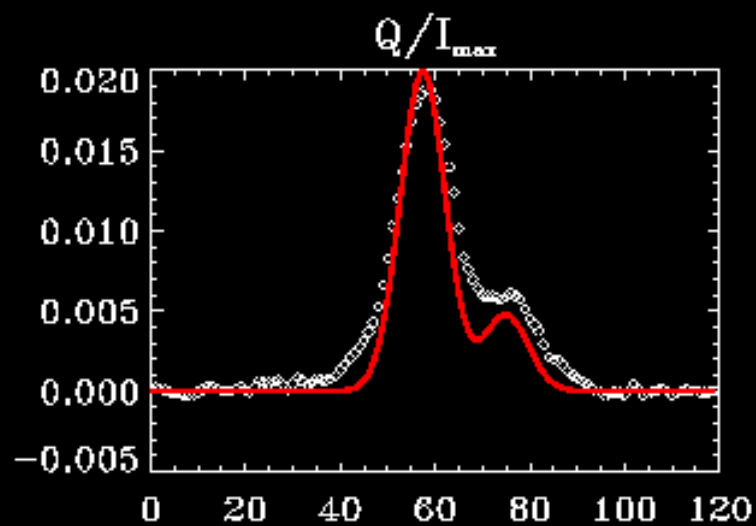
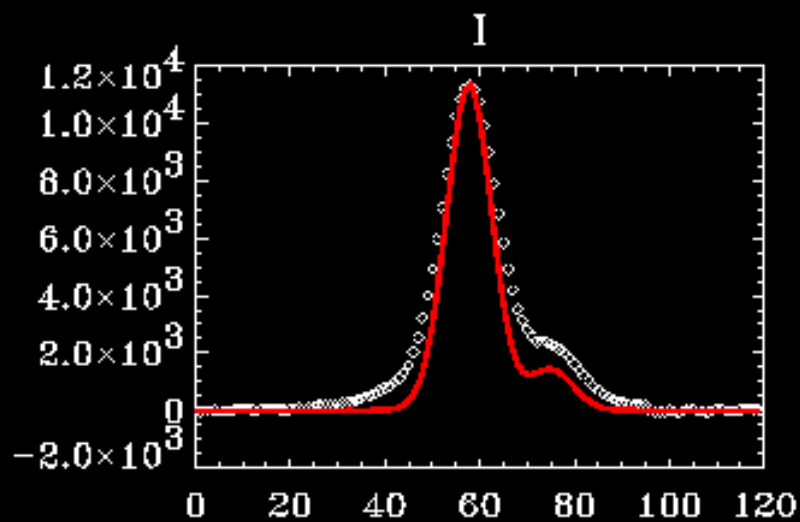




Inversion algorithm: PCA

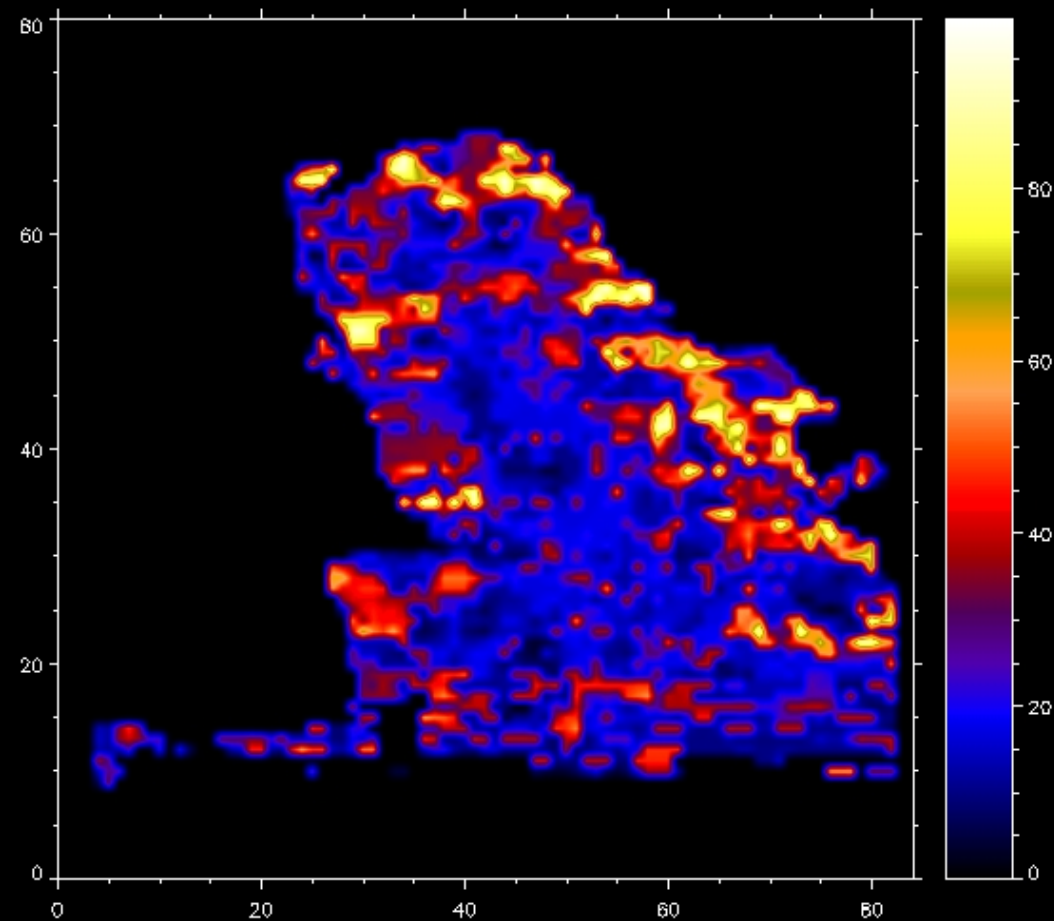
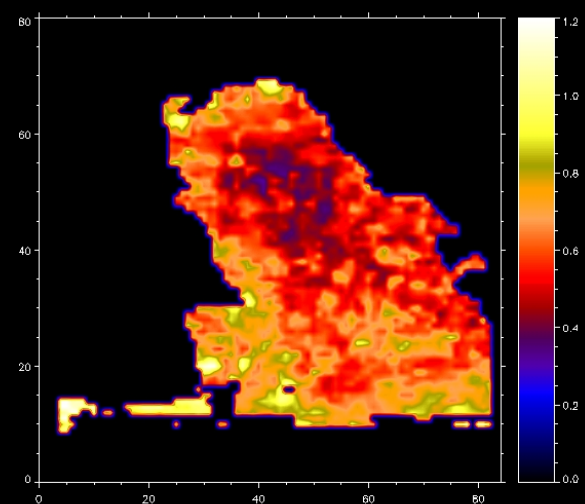
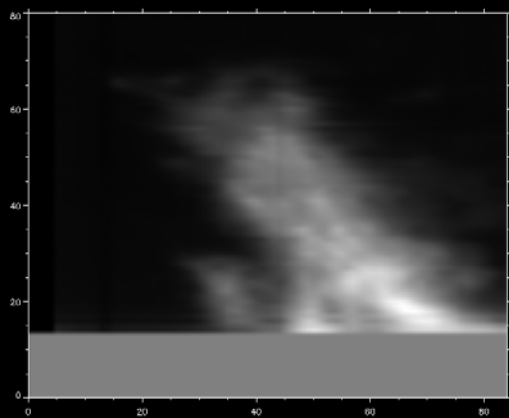




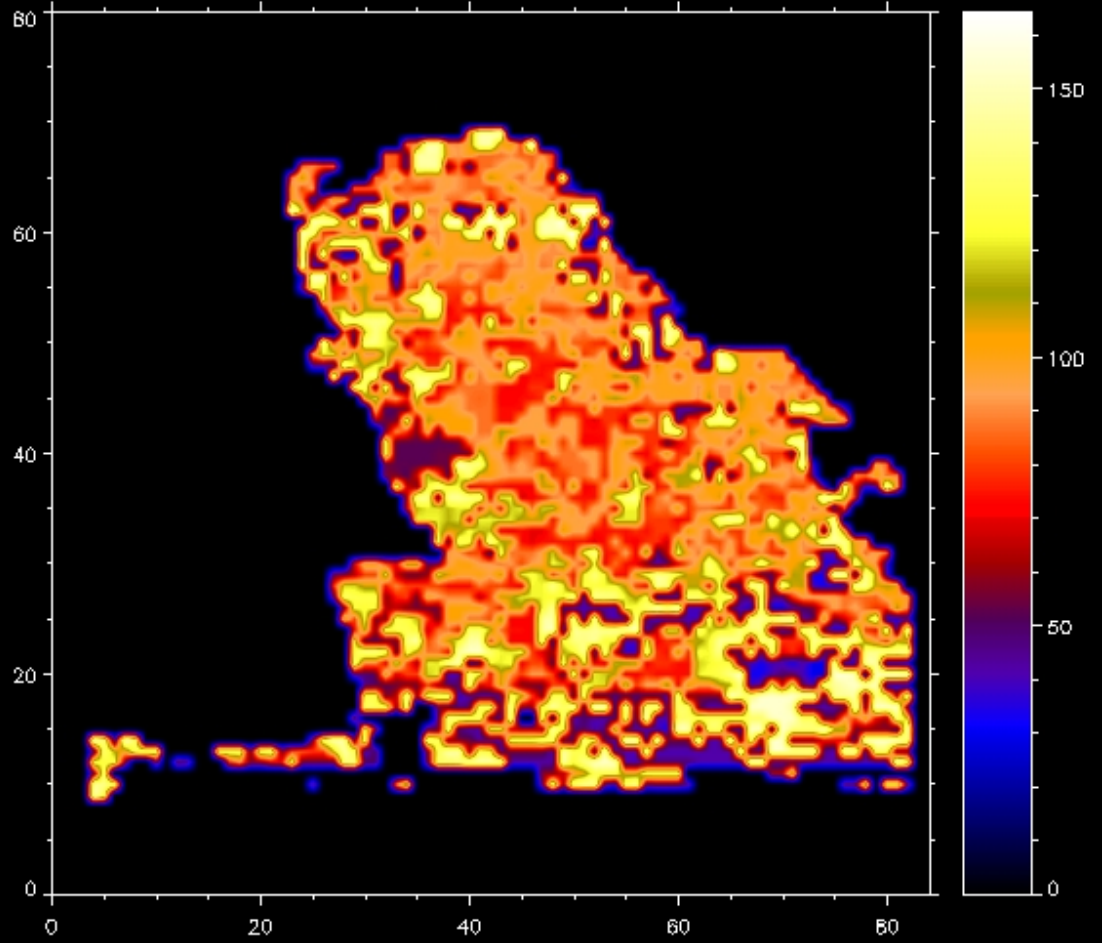
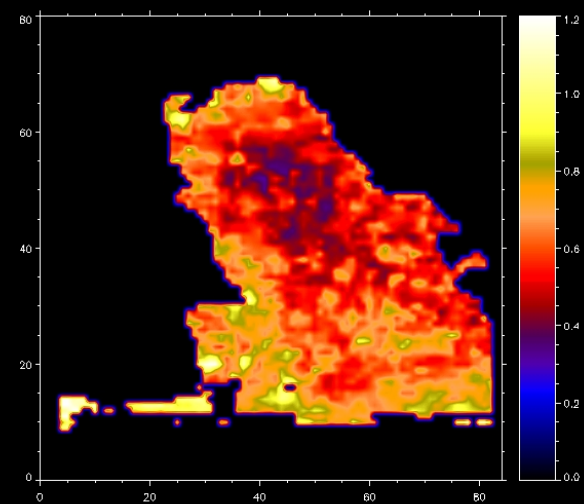
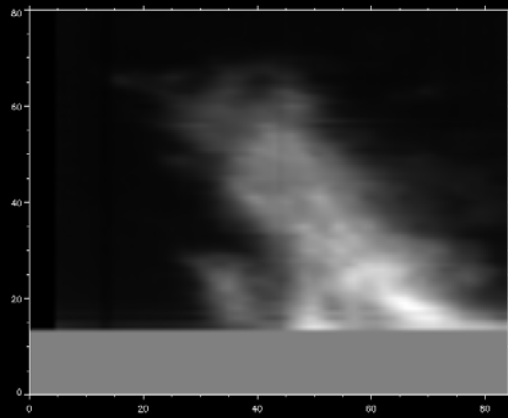


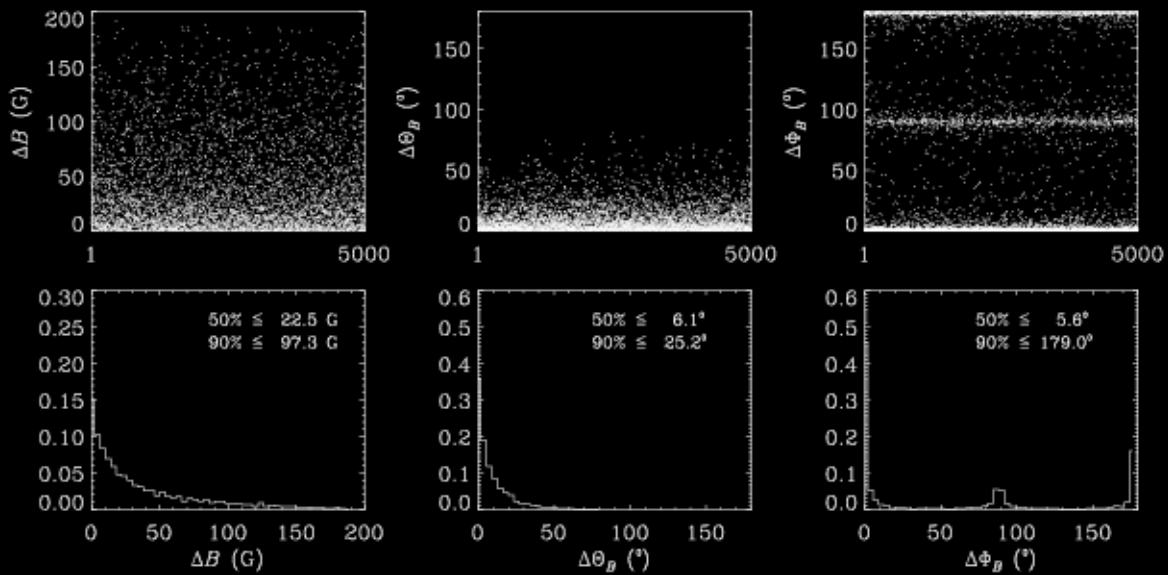


An example

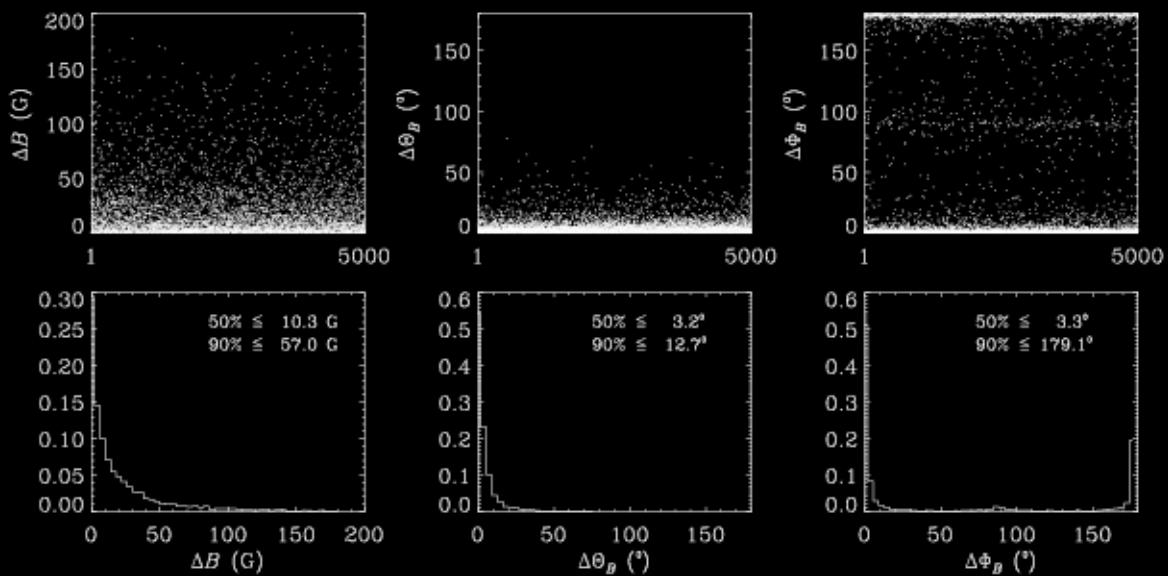


NSO/SPO DST with HAO/ASP, by Casini, López Ariste, Tomczyk, & Lites 2002





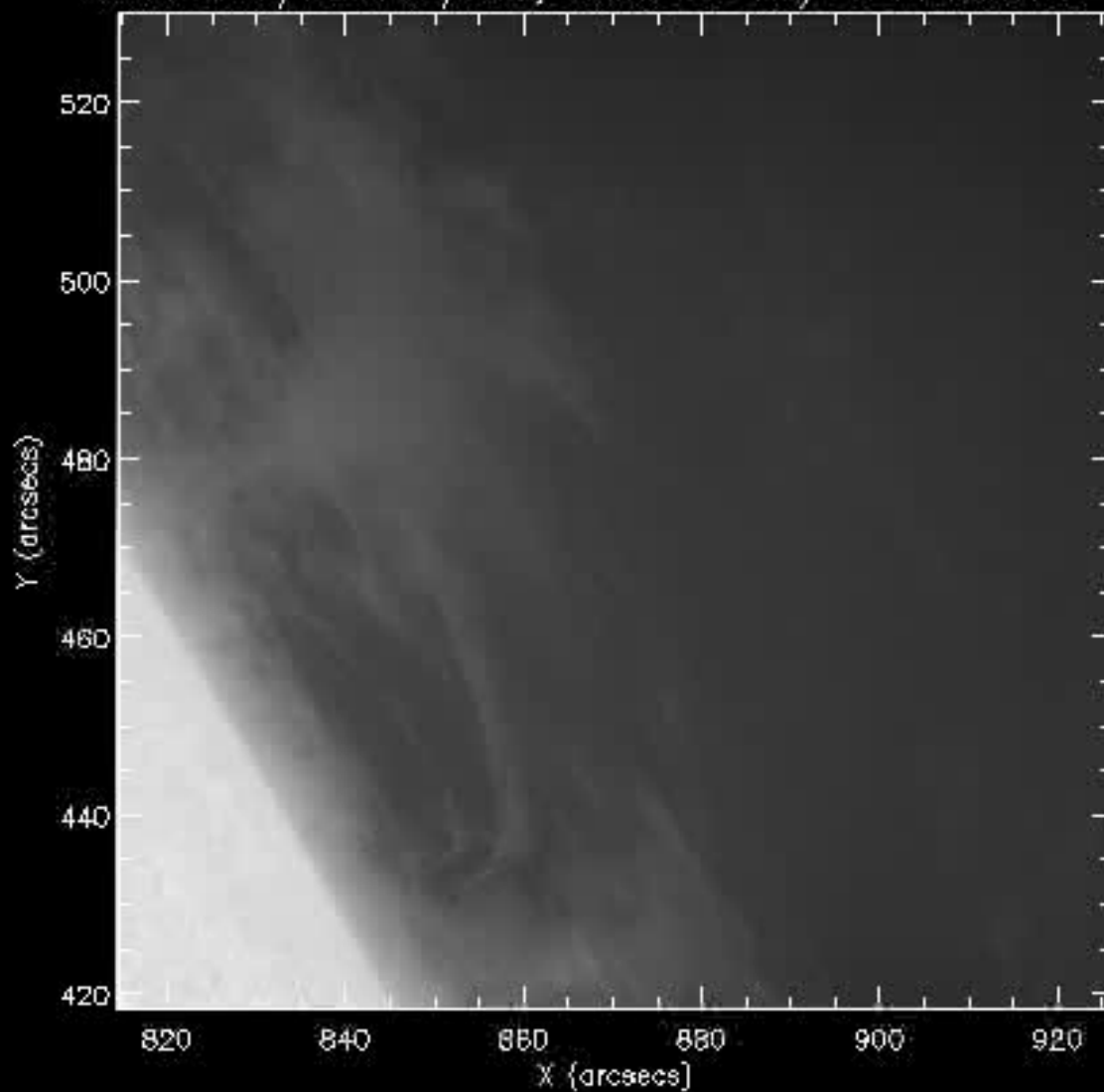
He 10830

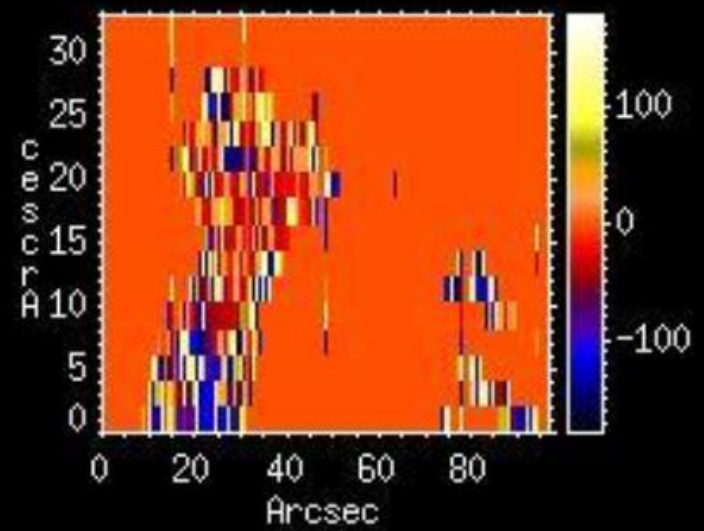
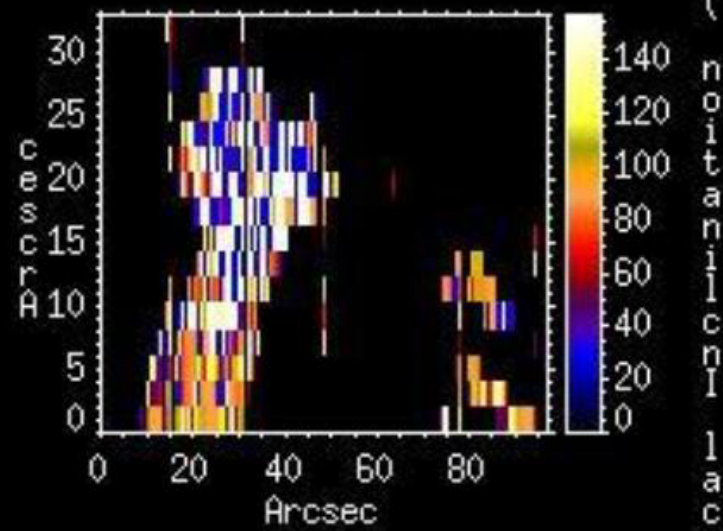
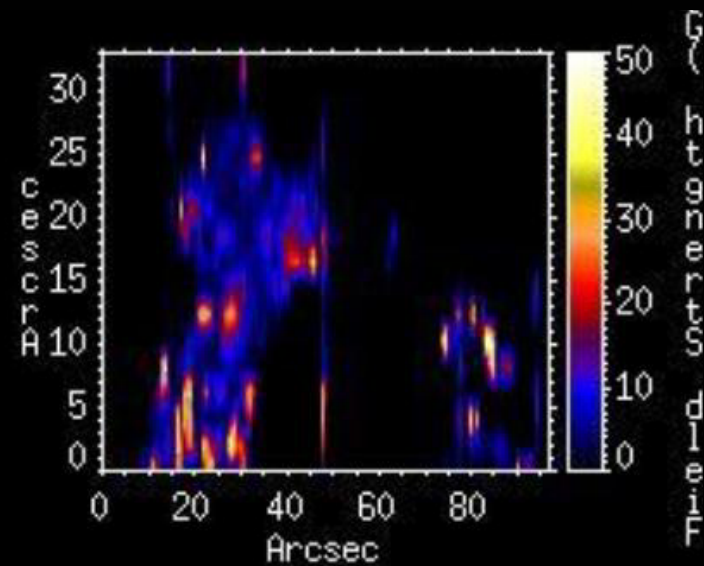
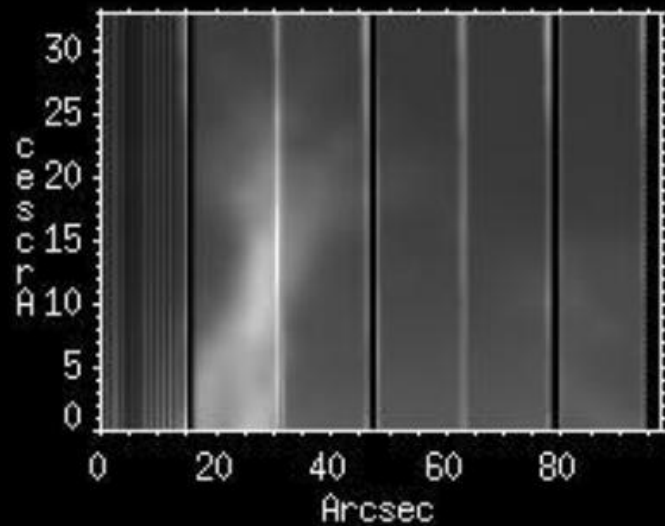


He D3

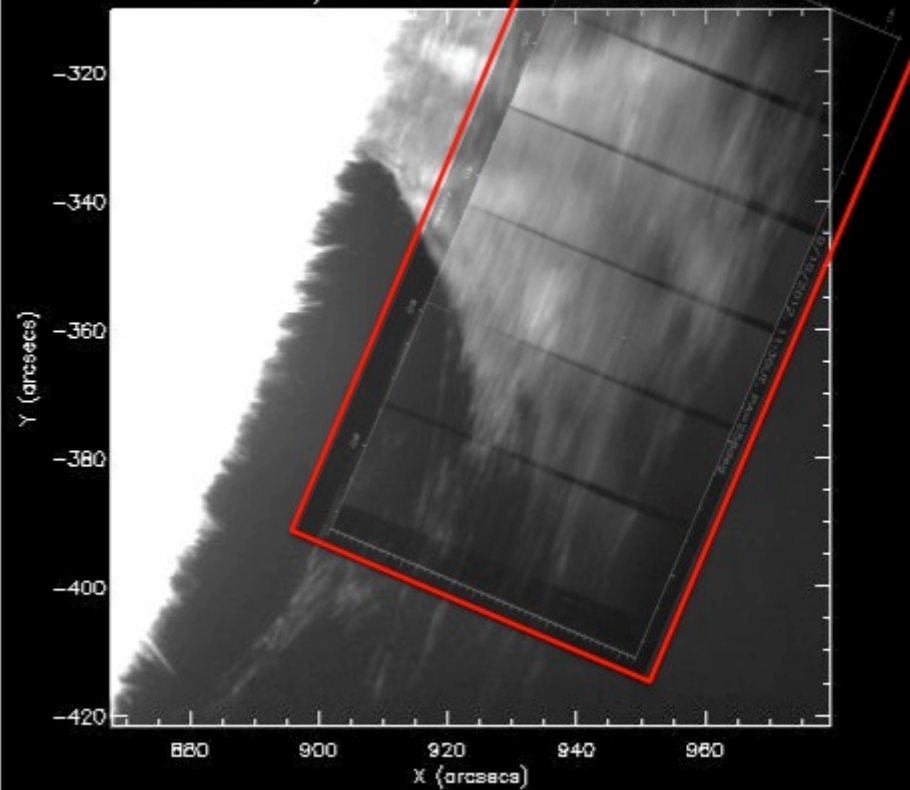


Hinode SOT/WB JAXA/ISAS, SIRIUS 23-May-2014 08:04:31 UT

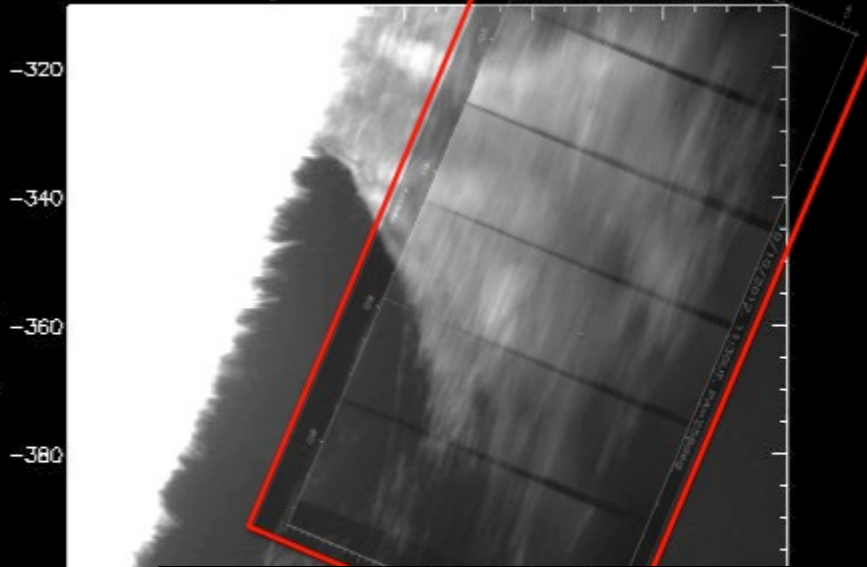




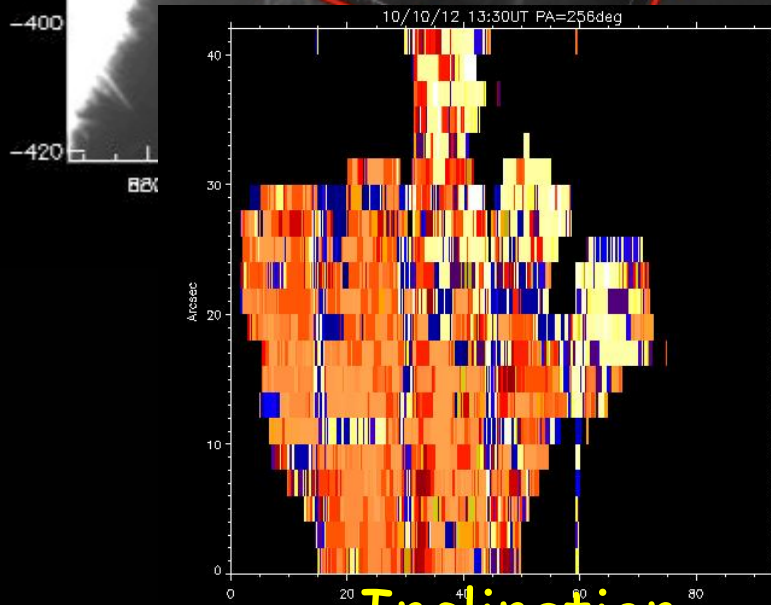
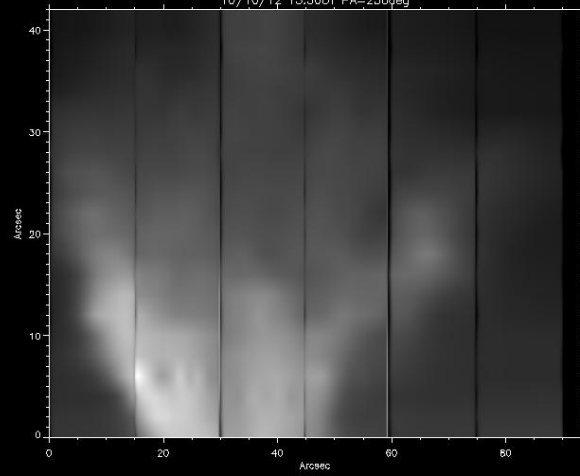
Hinode SOT/WB 10-Oct-2012 14:04:47.098 UT



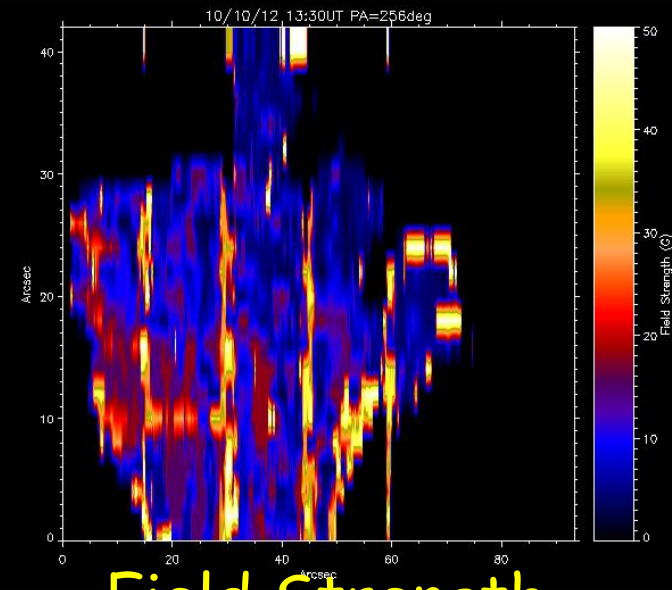
Hinode SOT/WB 10-Oct-2012 14:04:47.098 UT



10/10/12 13:30UT PA=256deg

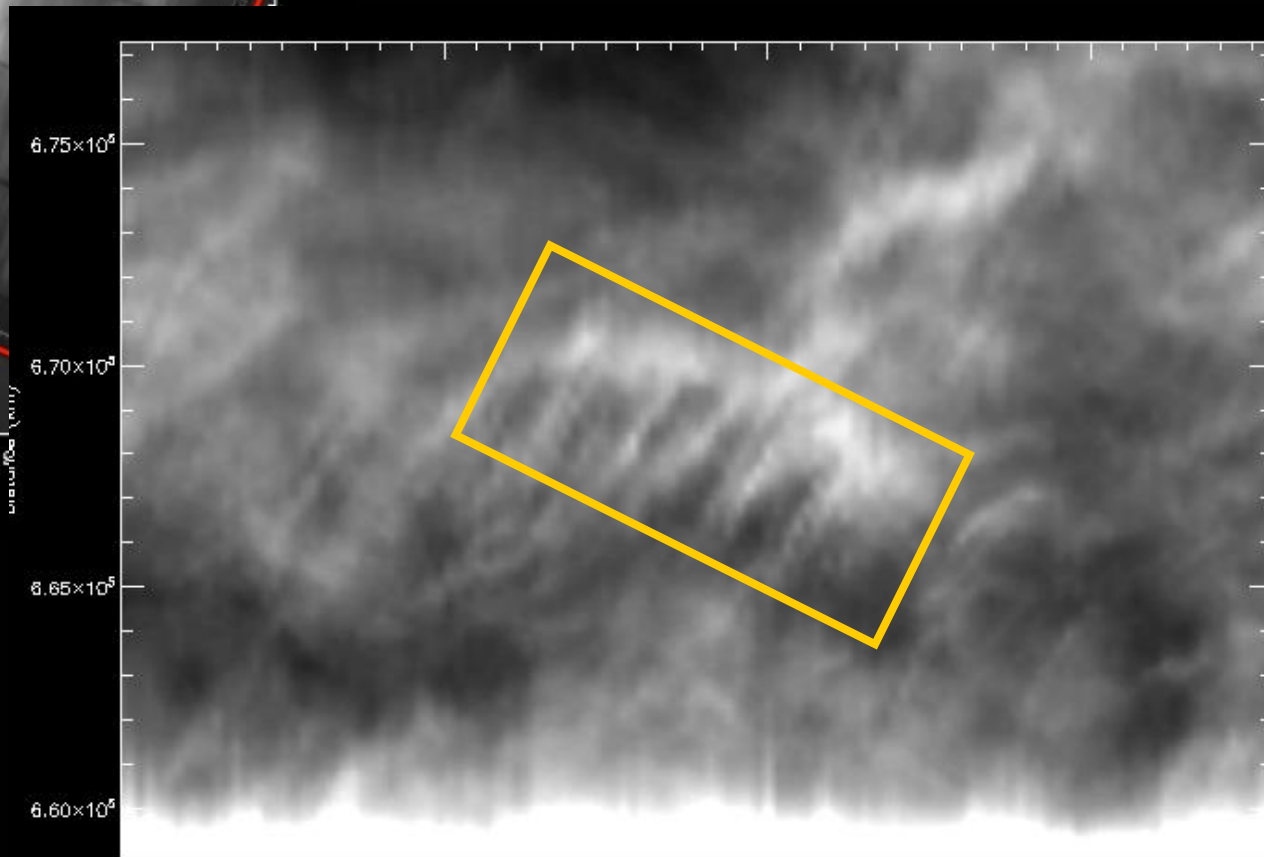
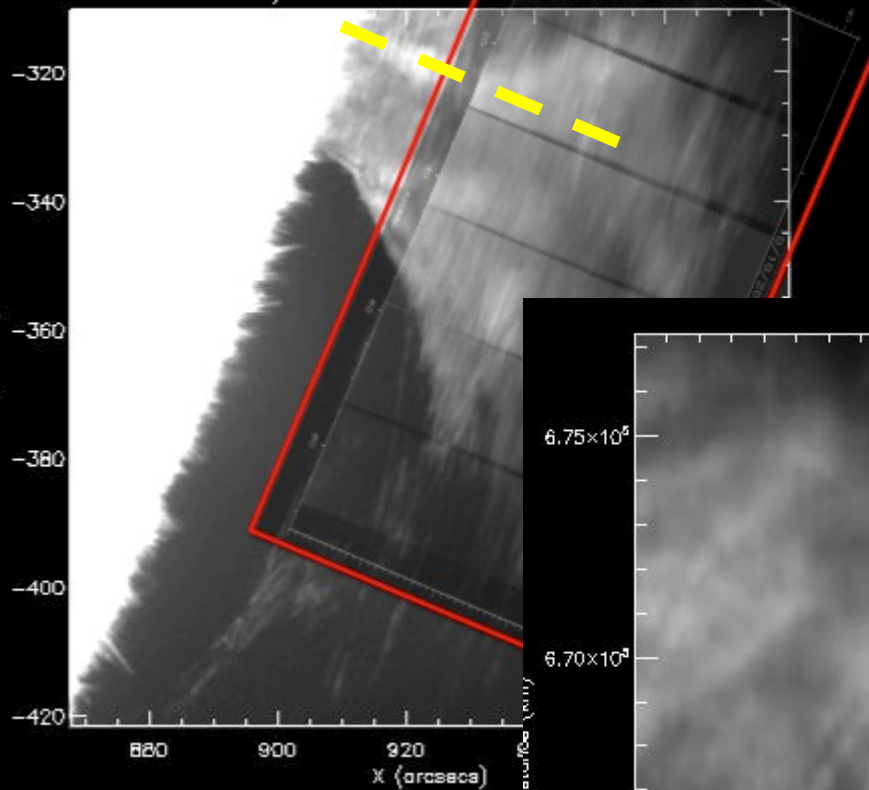


Inclination

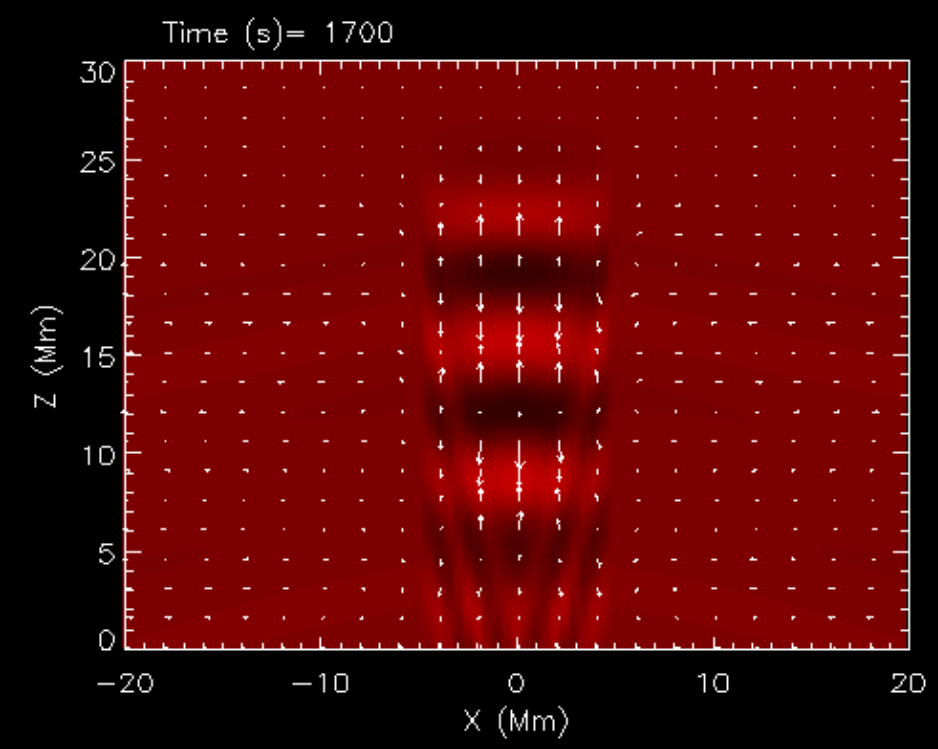
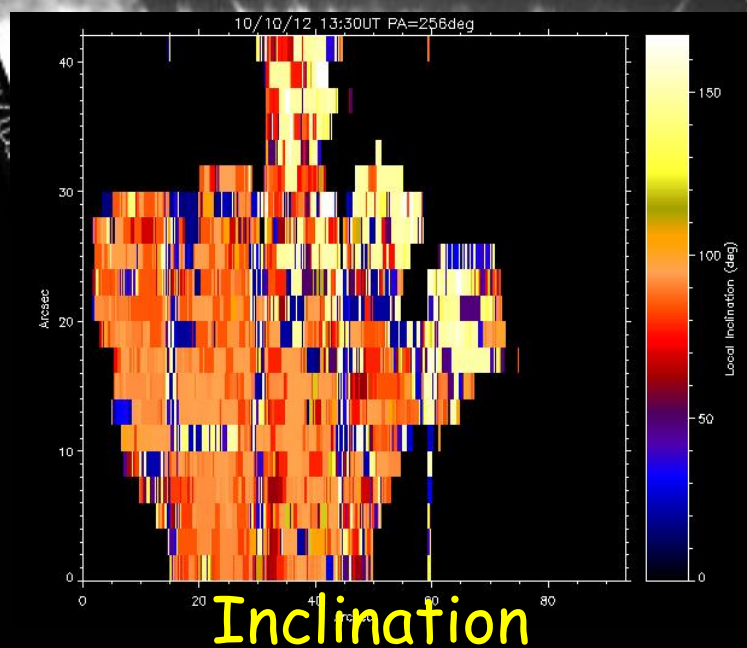
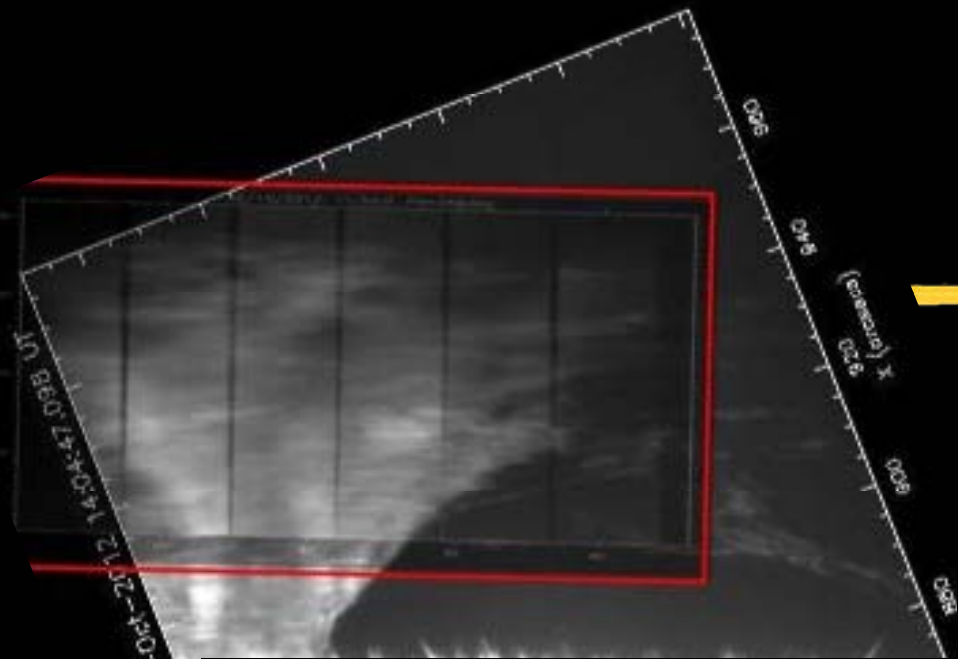


Field Strength

Hinode SOT/WB 10-Oct-2012 14:04:47.098 UT

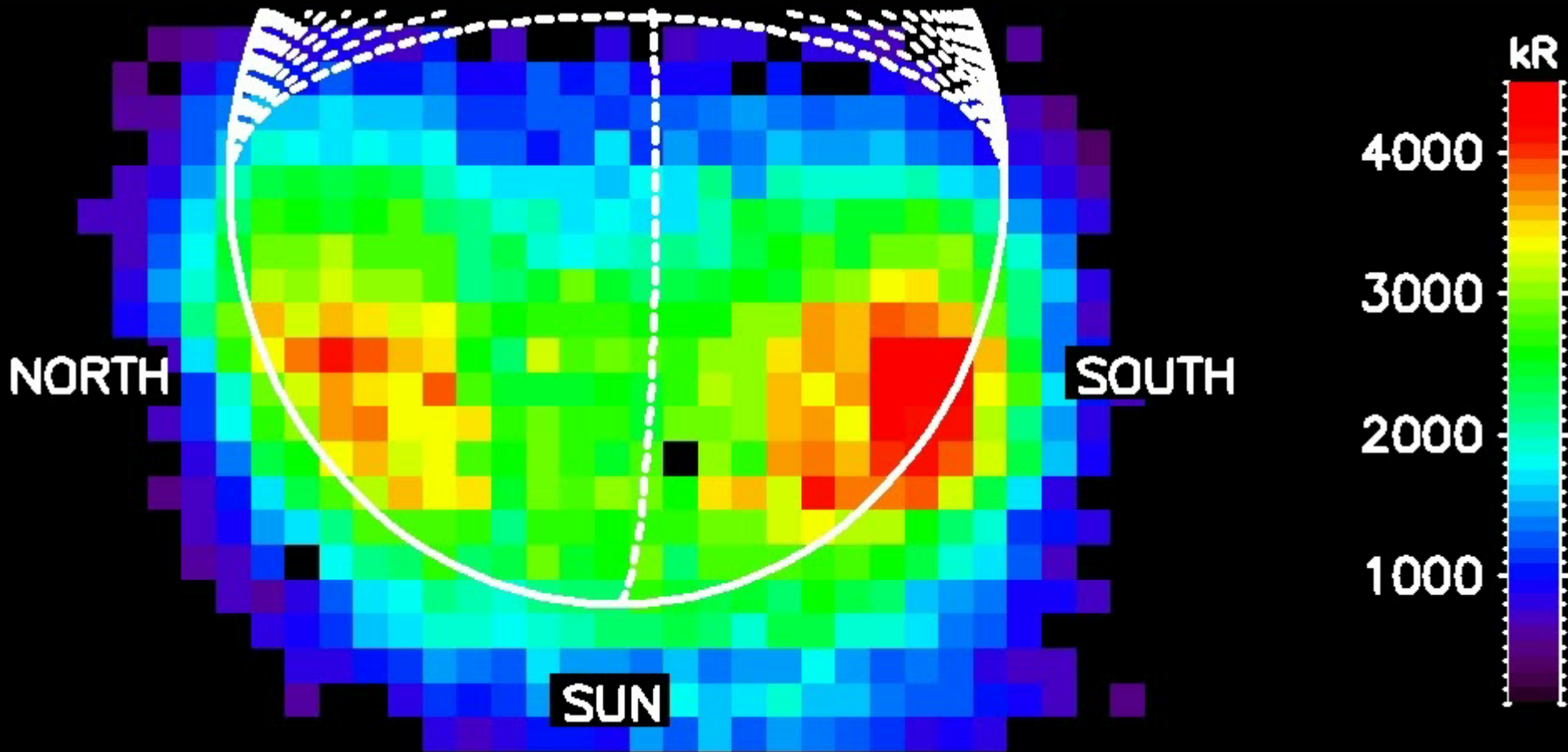


time



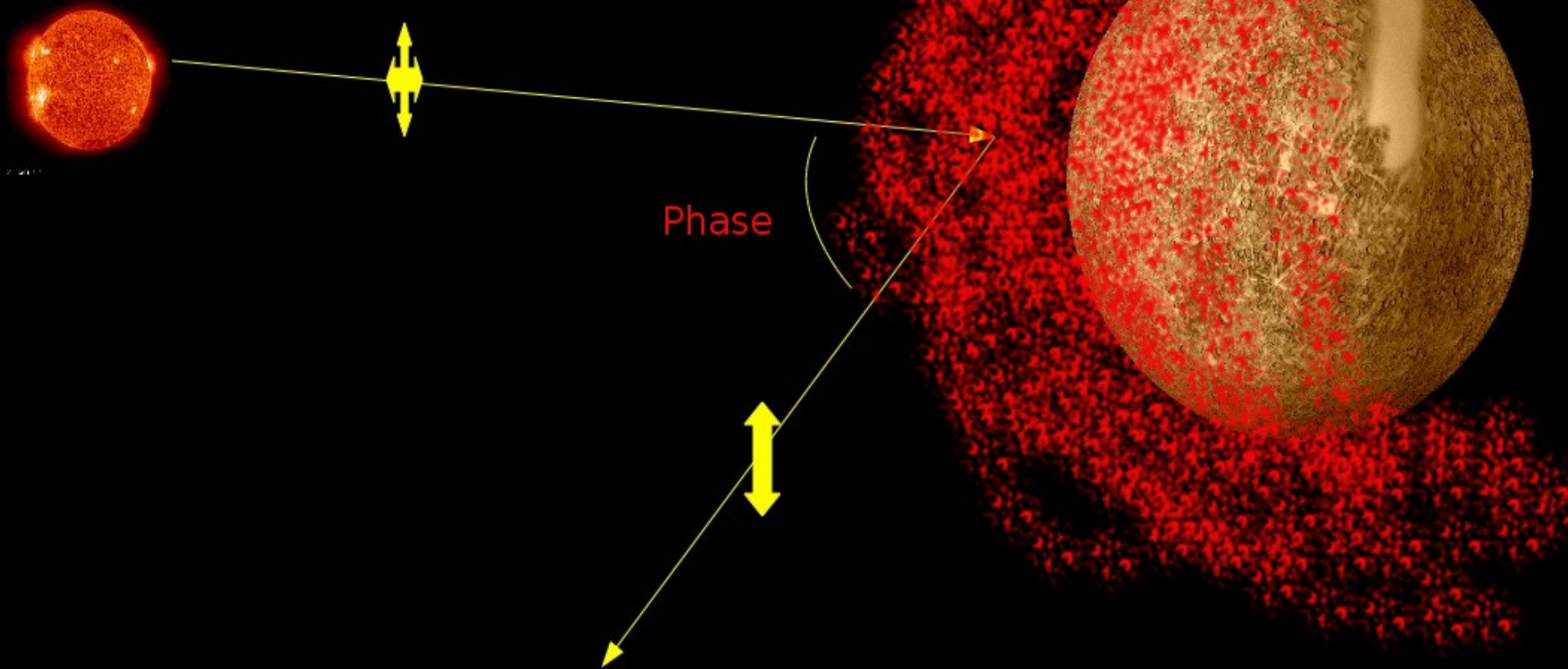
Mercury's atmosphere:

THEMIS
13 Juillet 2008

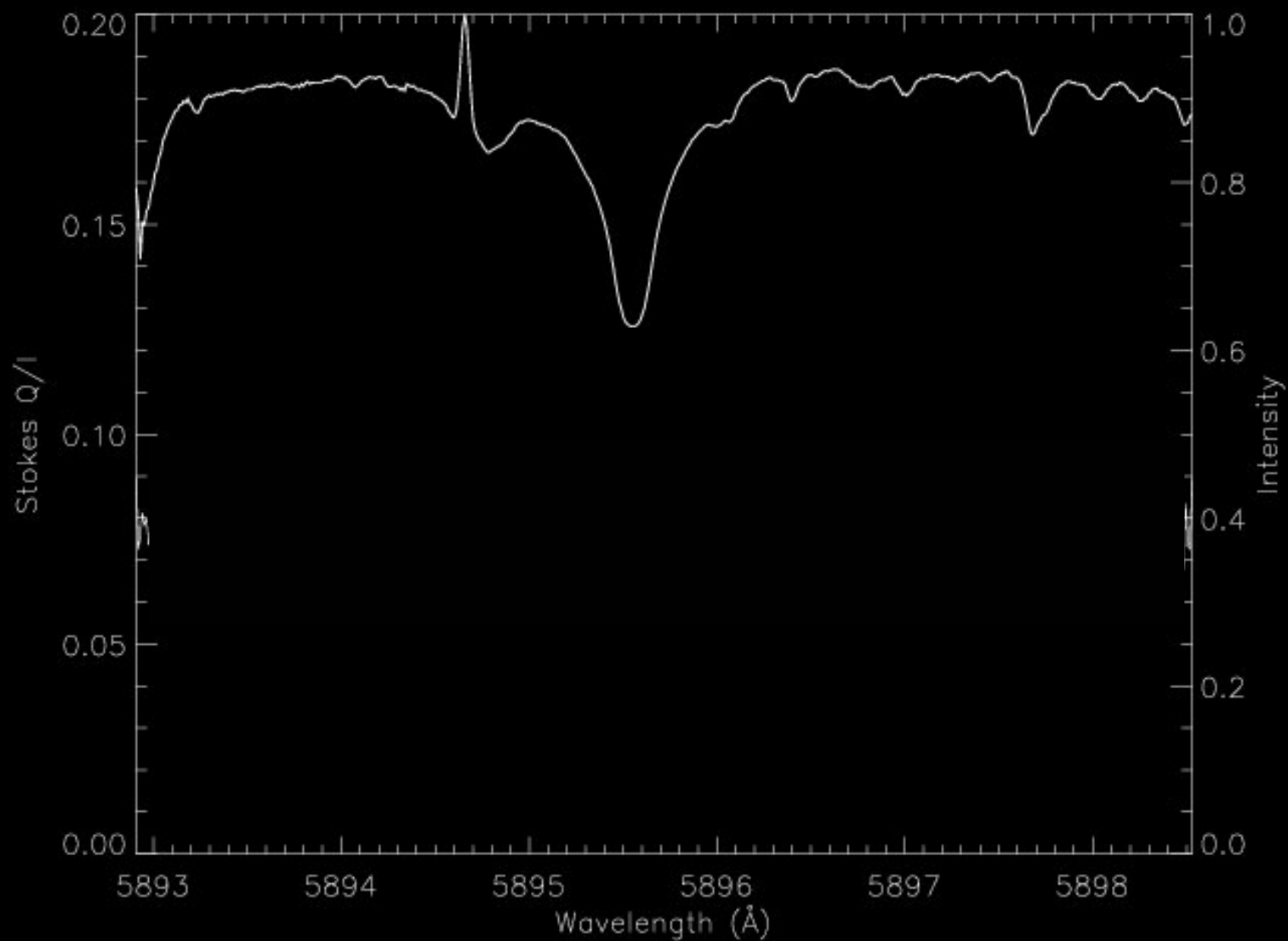


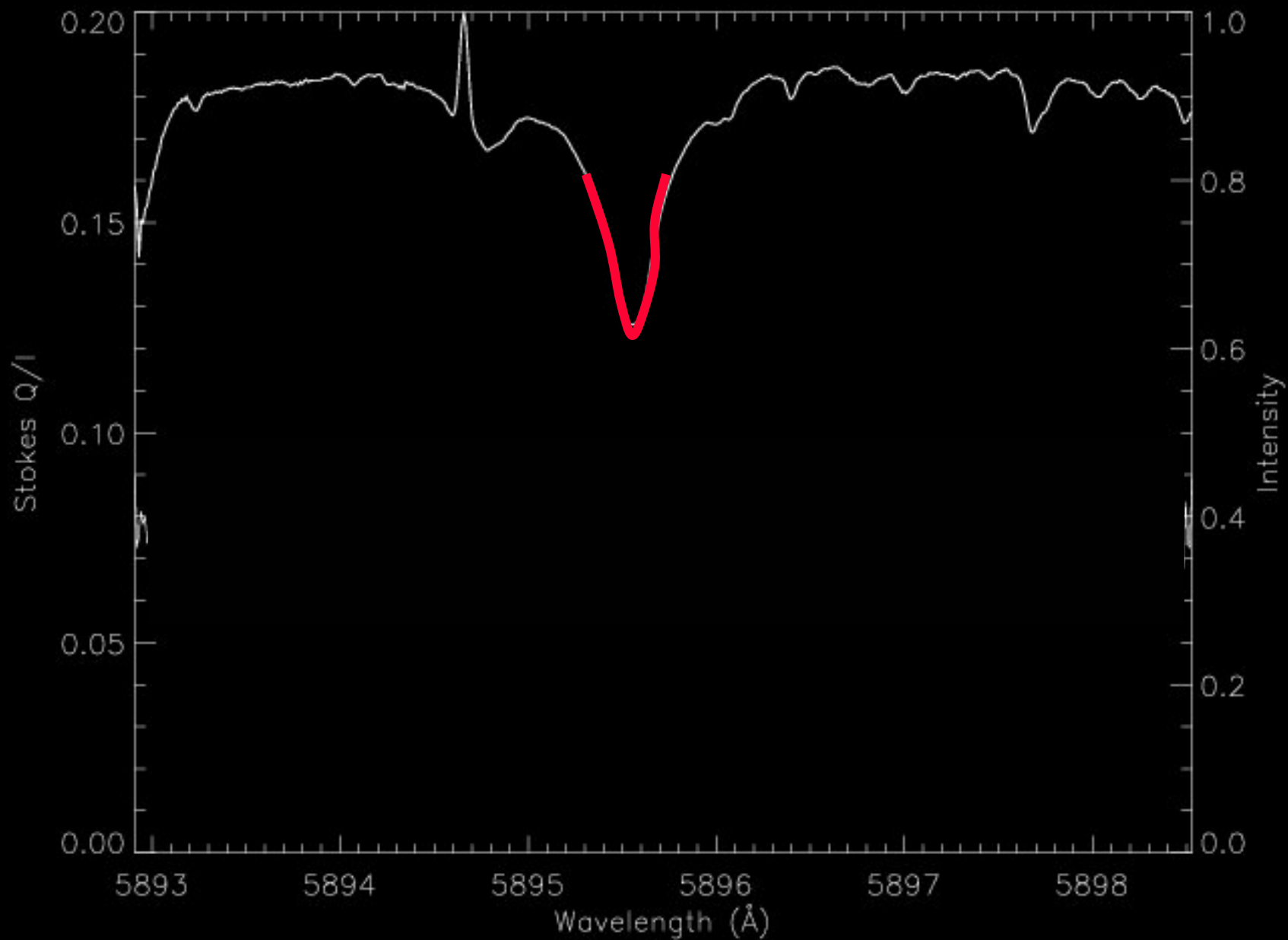
7 hours of continuous mapping.
Coronagraphy at $83 R_{\odot}$

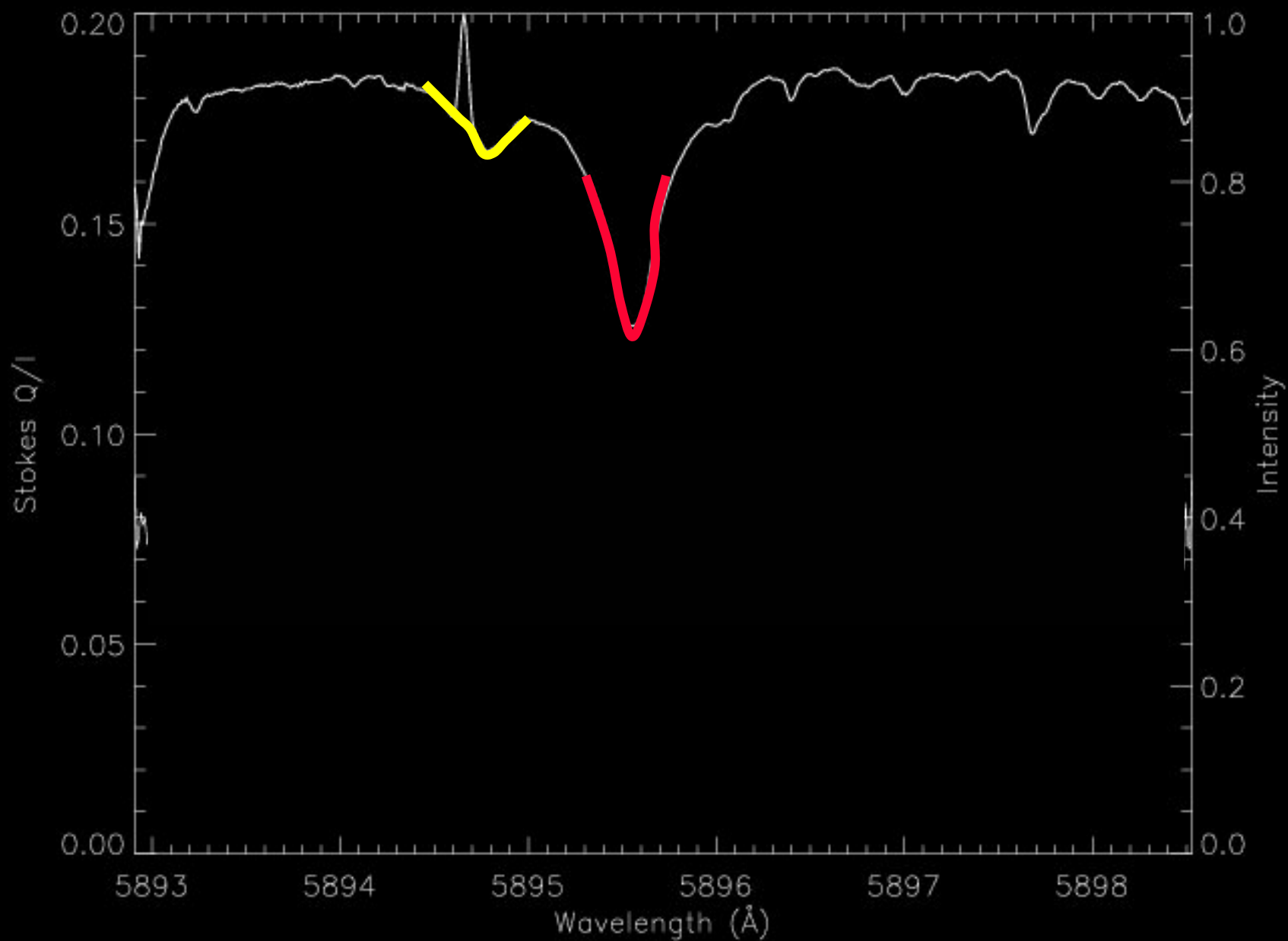
Intensity of the
Na D₂₁ line

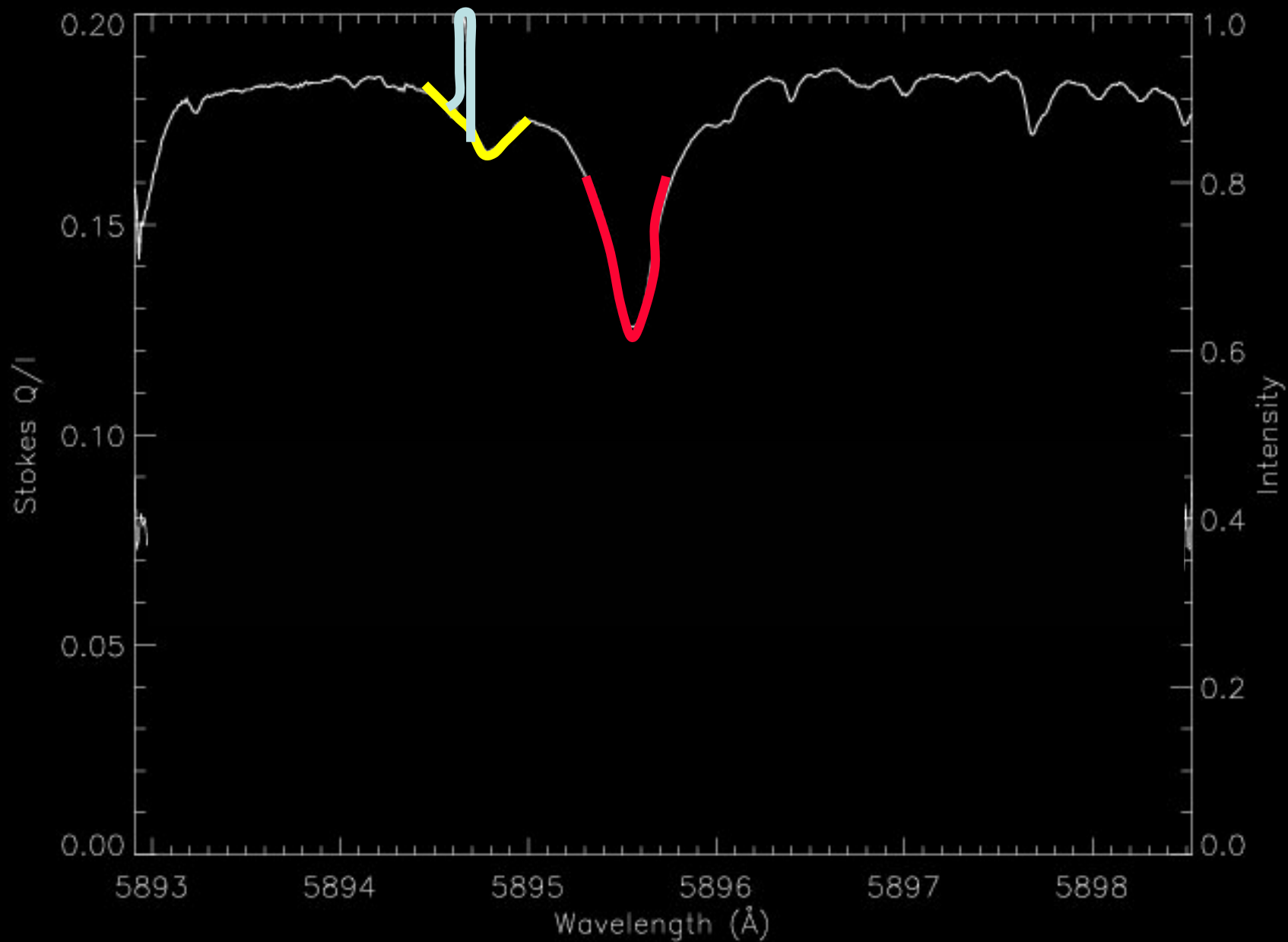






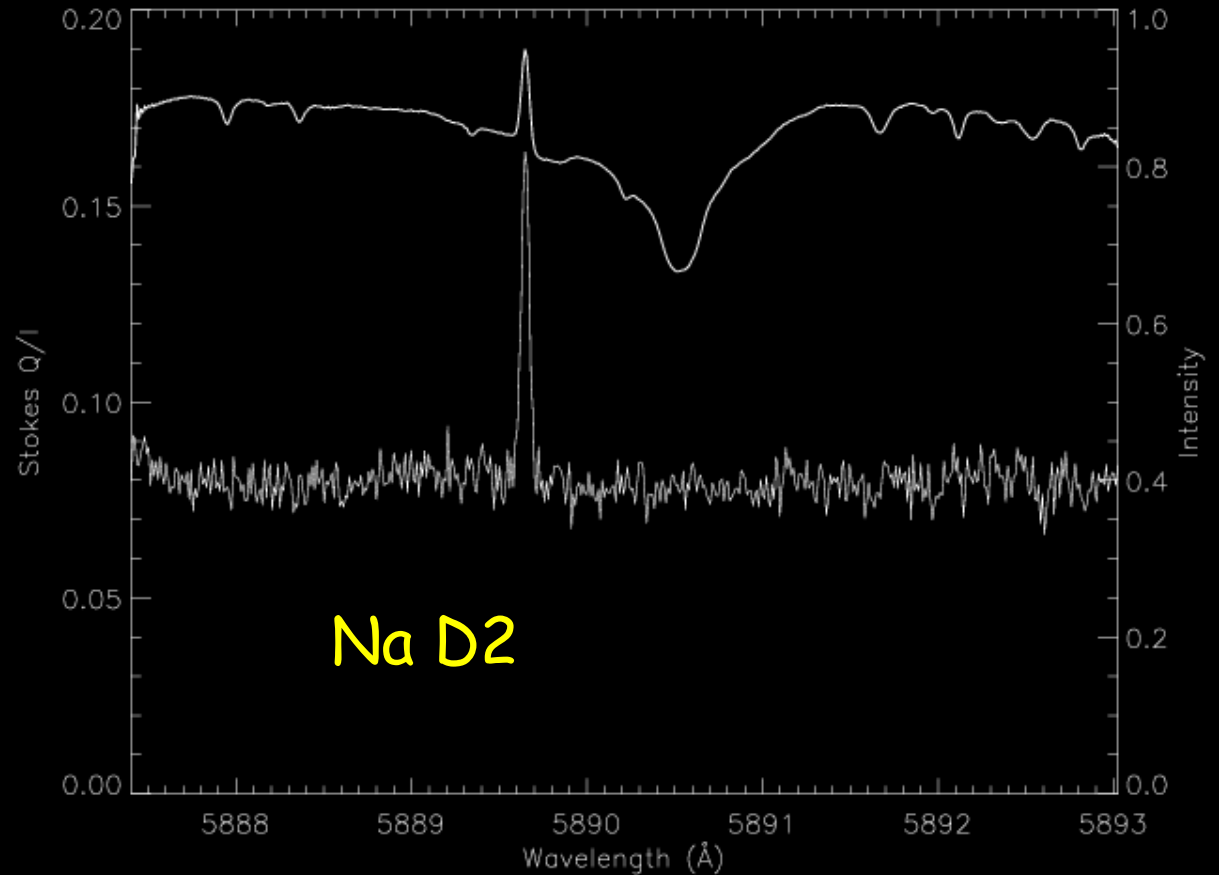
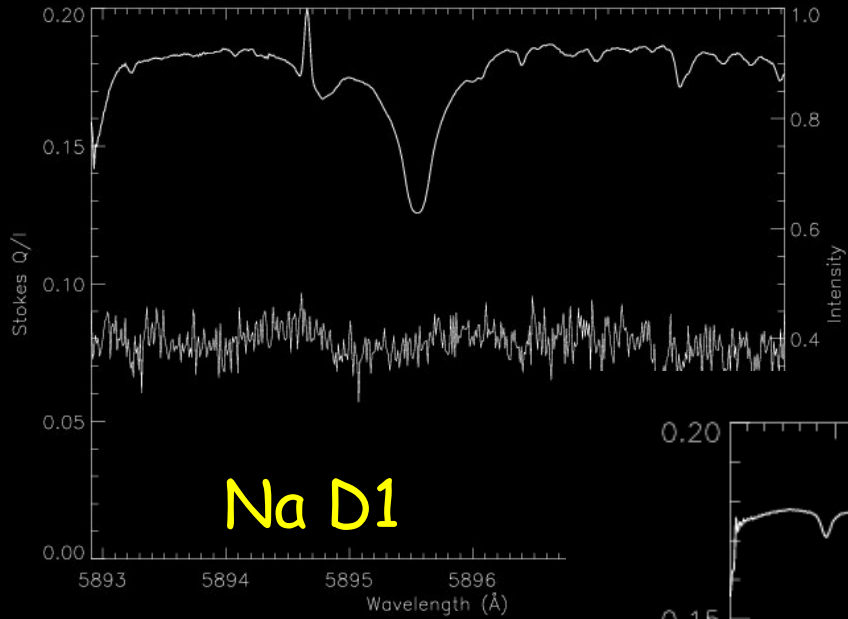


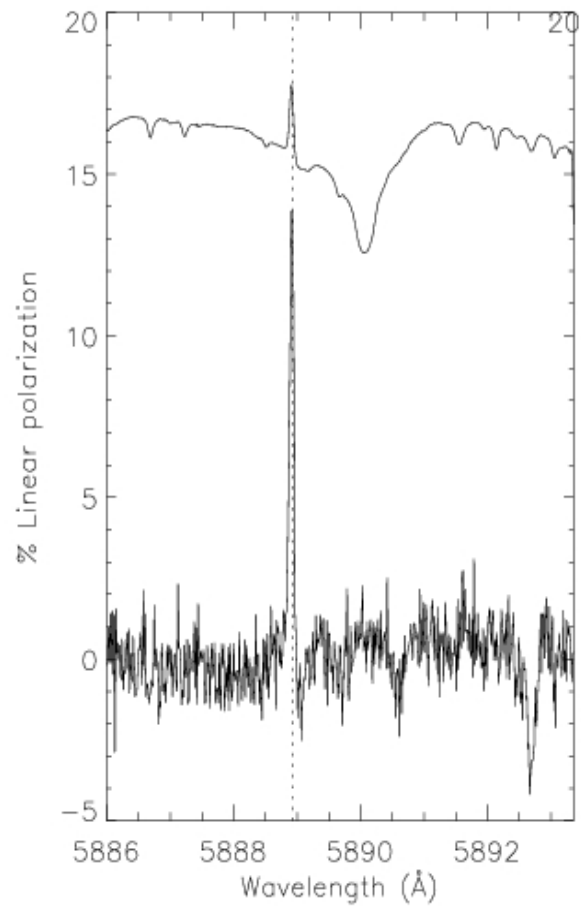
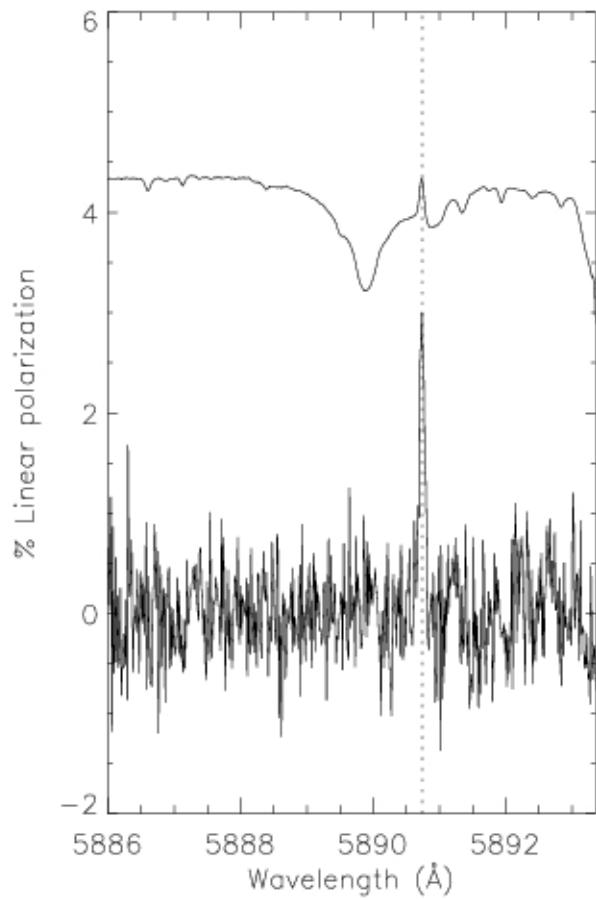




THEMIS POL³ instrument October 2010 & April 2011

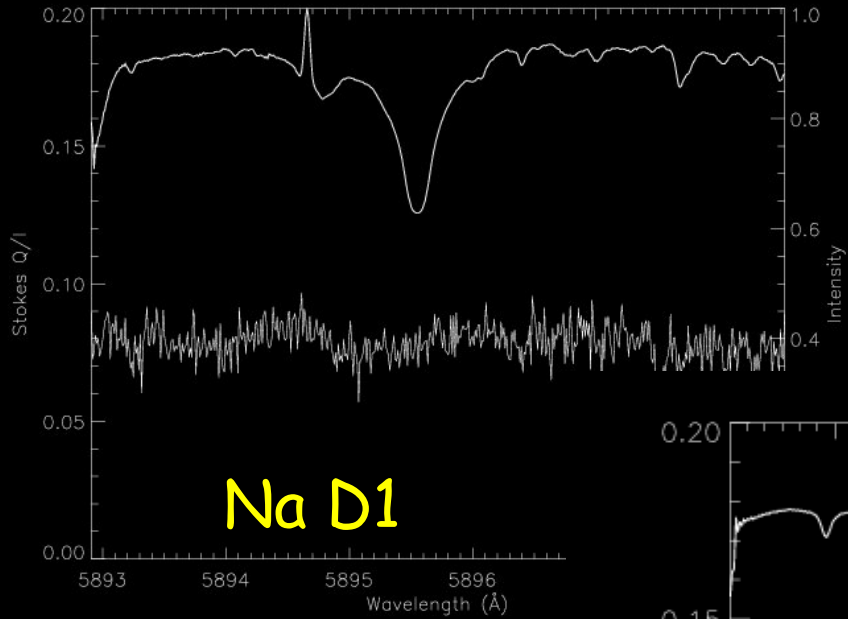
López Ariste et al. (2011)



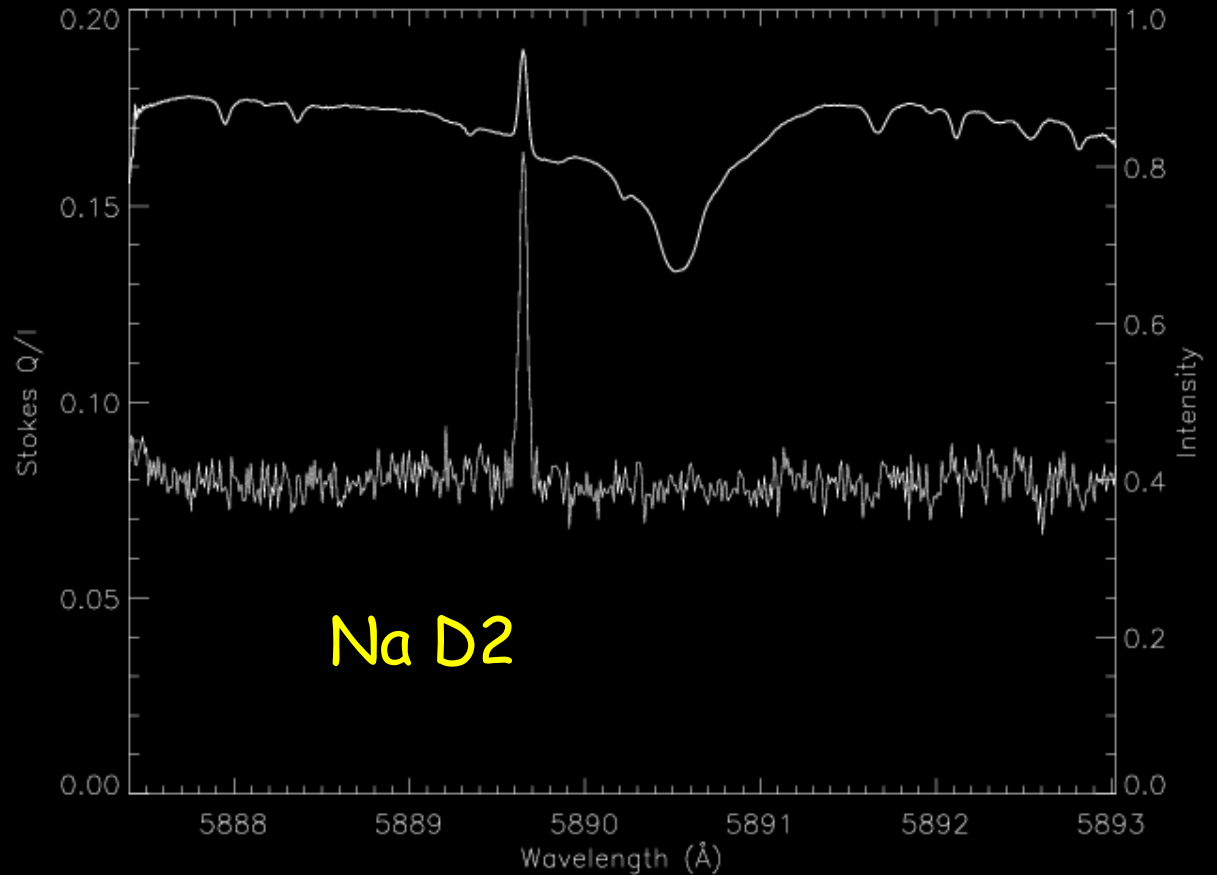


THEMIS POL³ instrument October 2010 & April 2011

López Ariste et al. (2011)



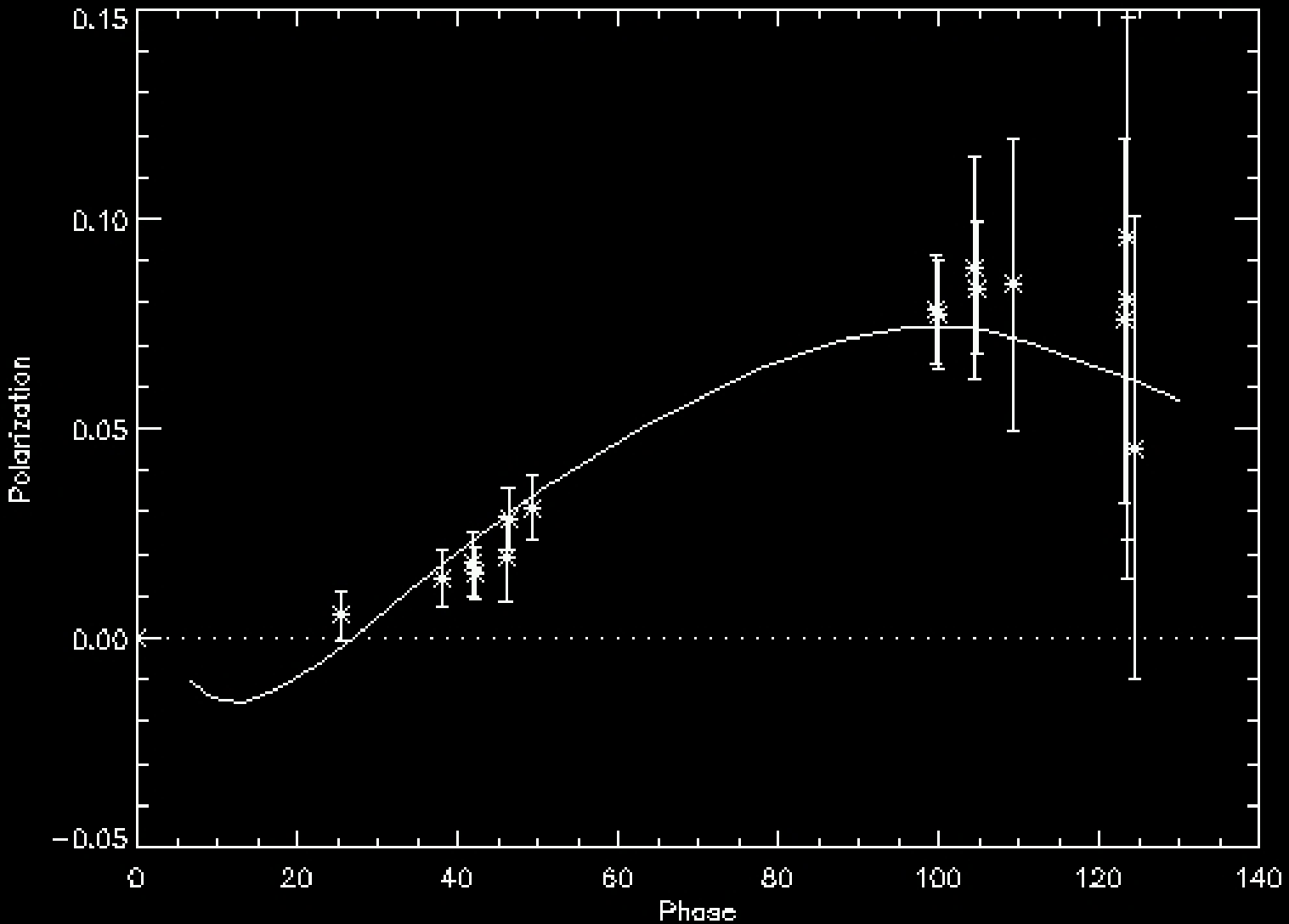
Na D1



Na D2

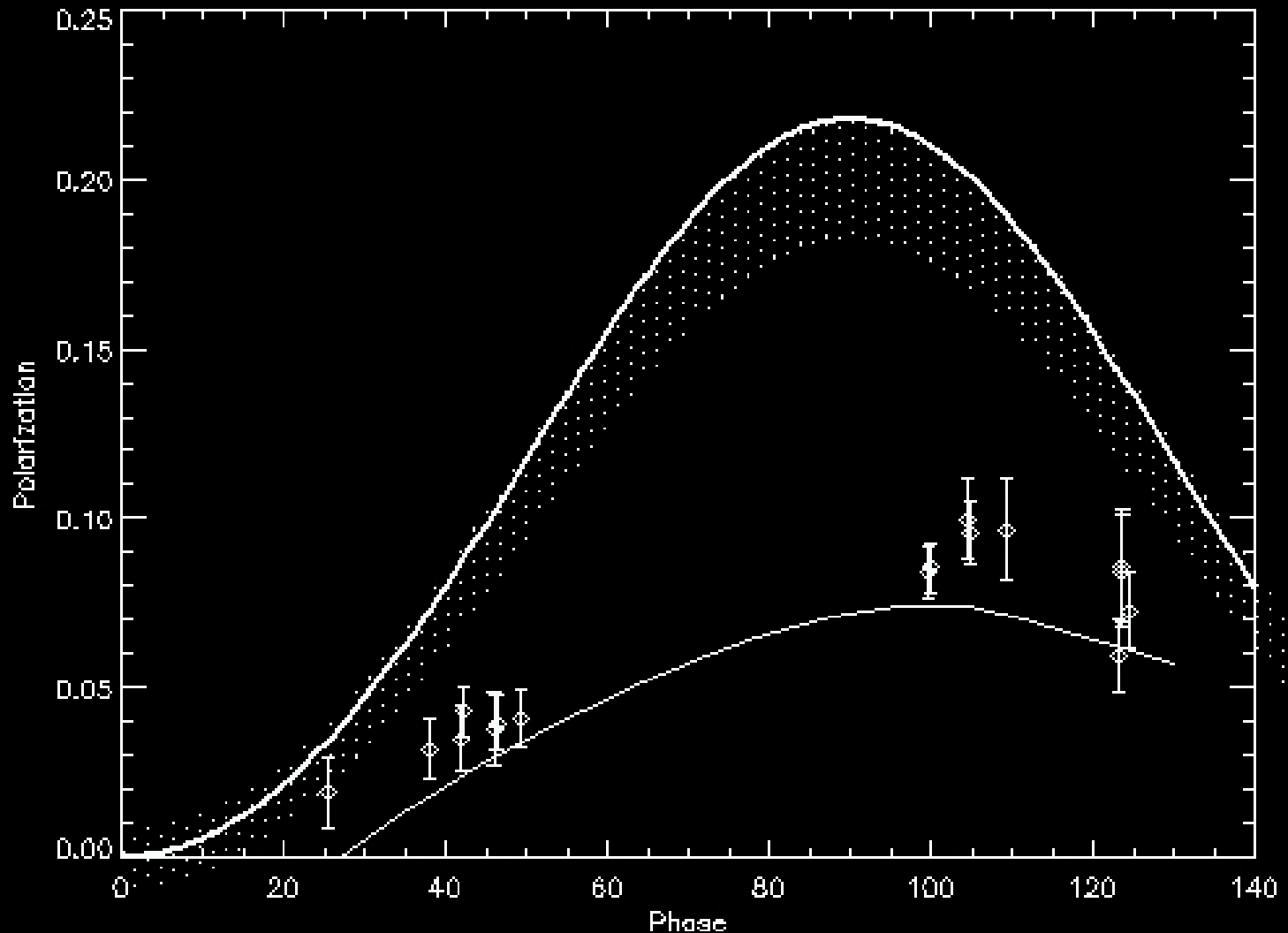


Polarisation of the continuum





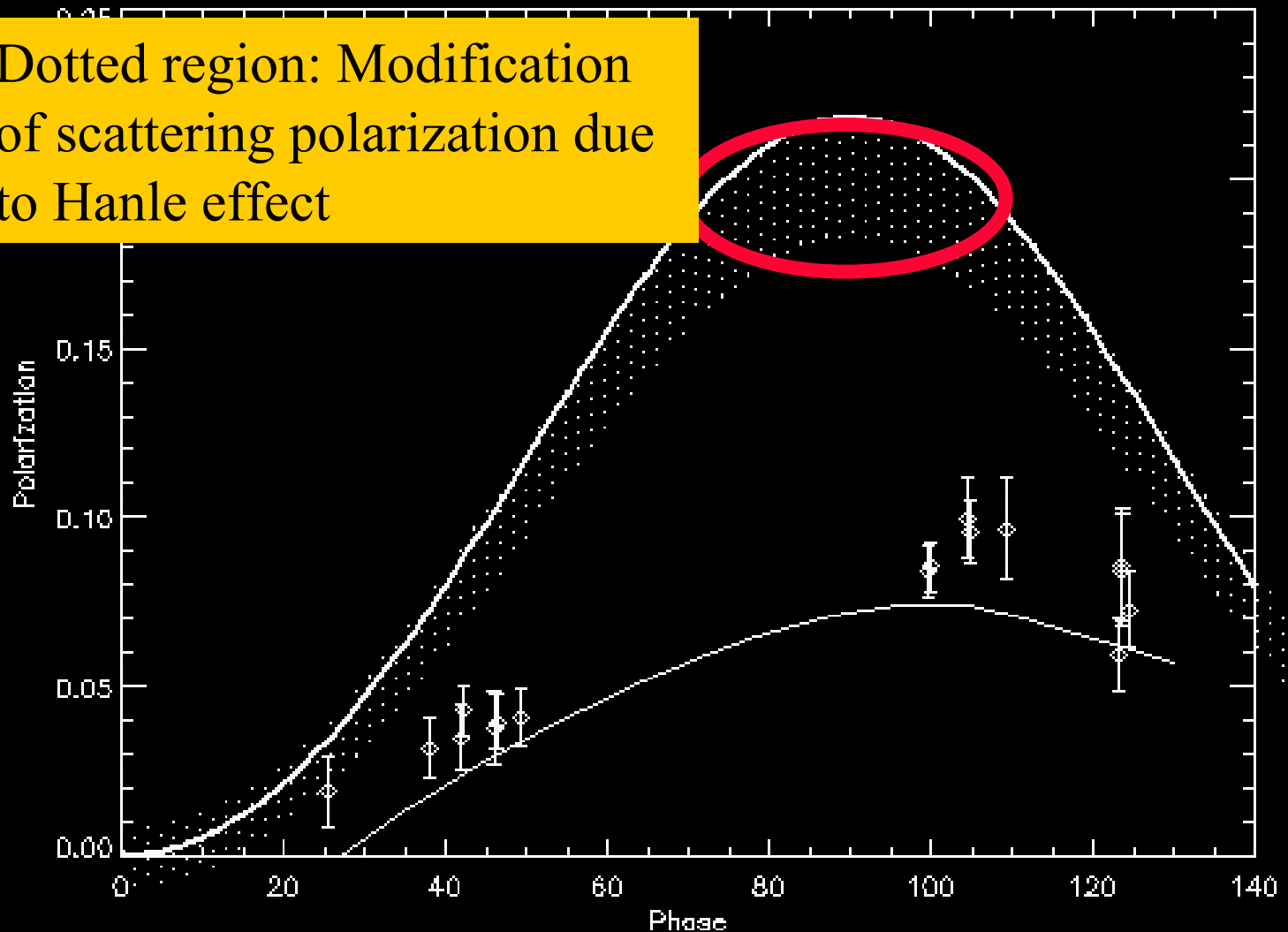
Polarisation of Na D₂





Polarisation of Na D₂

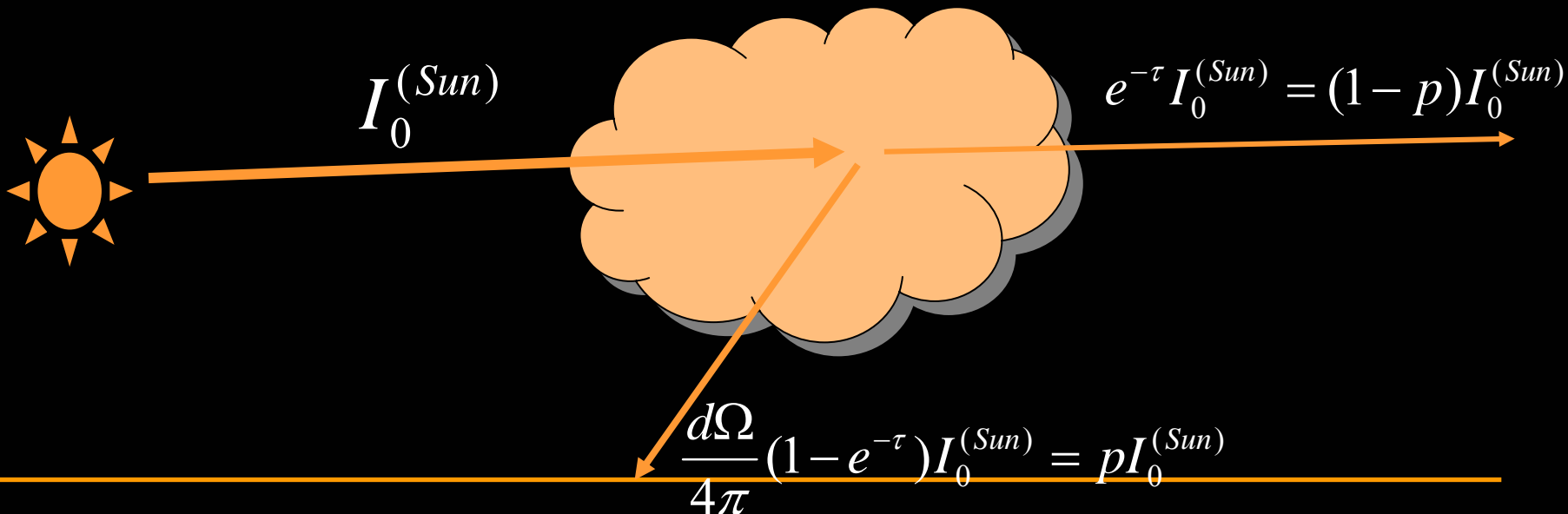
Dotted region: Modification of scattering polarization due to Hanle effect





Radiative transfer effects

$$M\left(\frac{Q}{I}\right) = \frac{pQ}{pI + p^2I + p^3I + \dots}$$

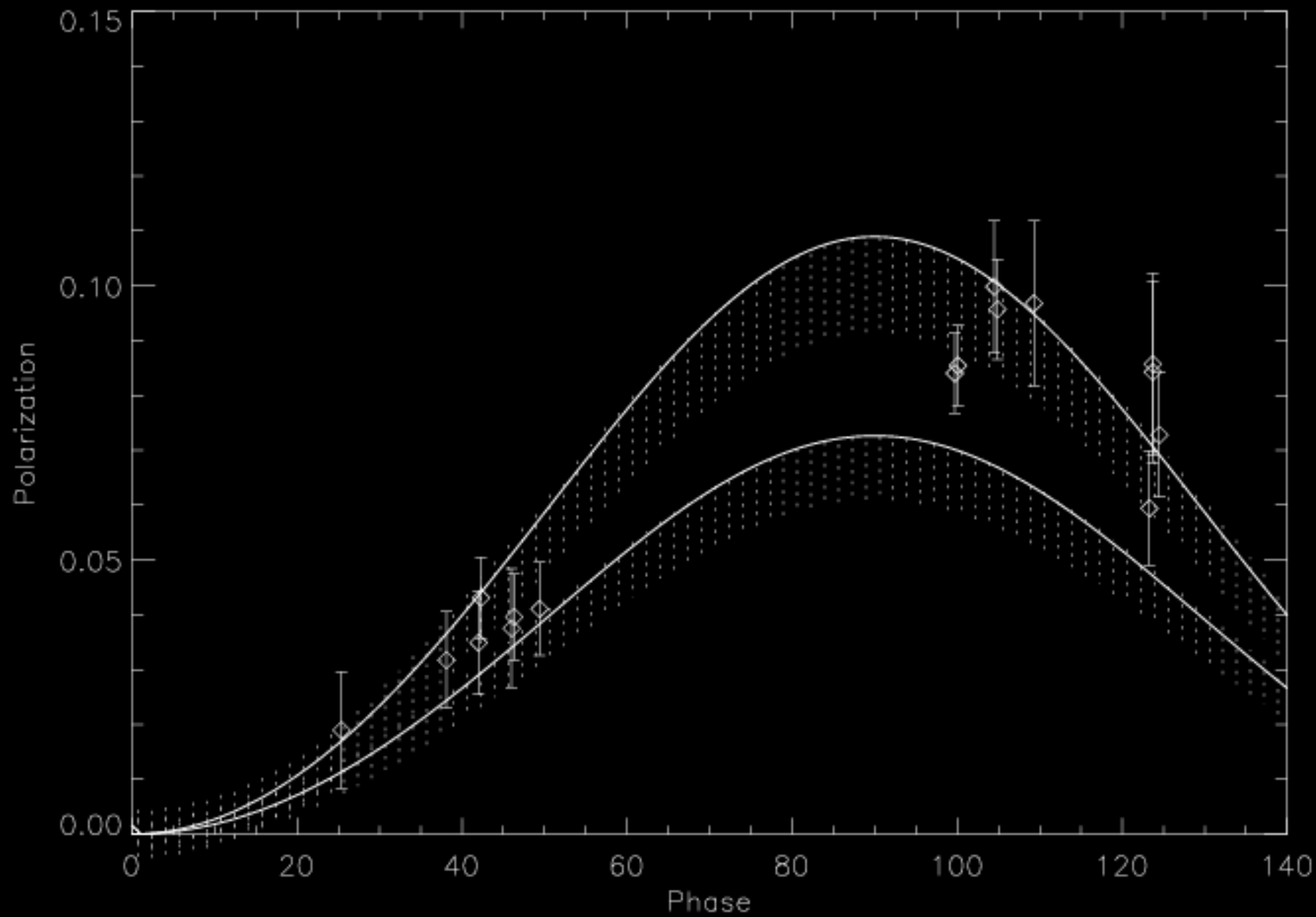




From D_2/D_1 intensity ratios and models of the exosphere of Mercury

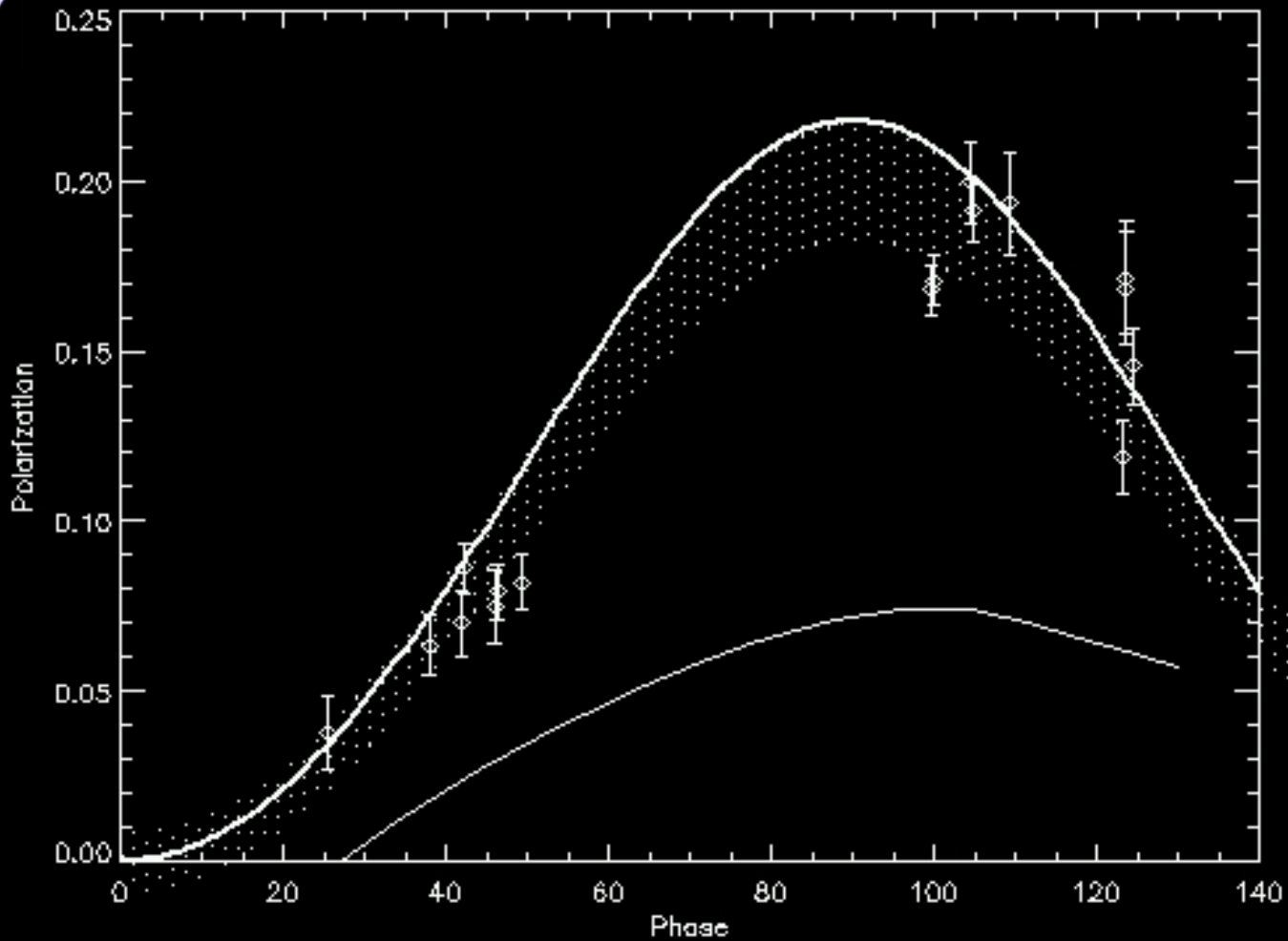
$$\tau = 1 \rightarrow 1.5$$

$$p = 0.6 \rightarrow 0.8$$

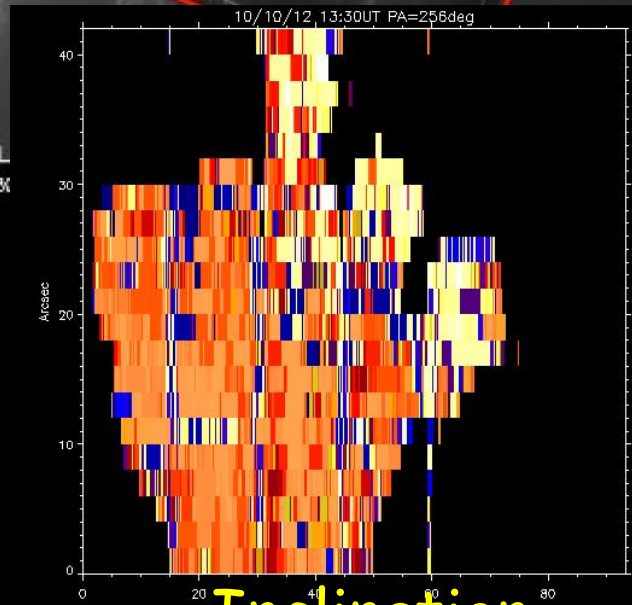
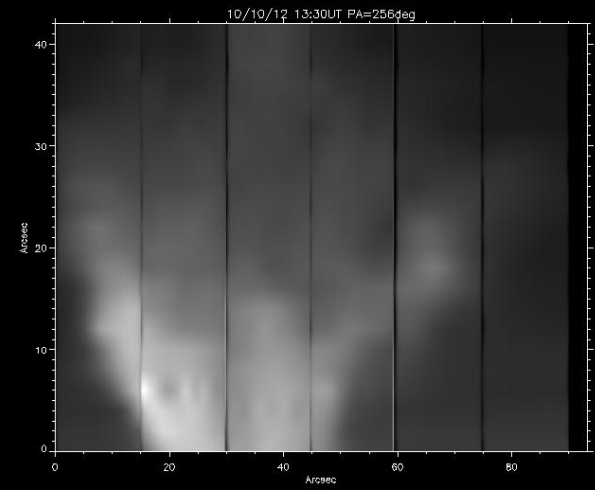
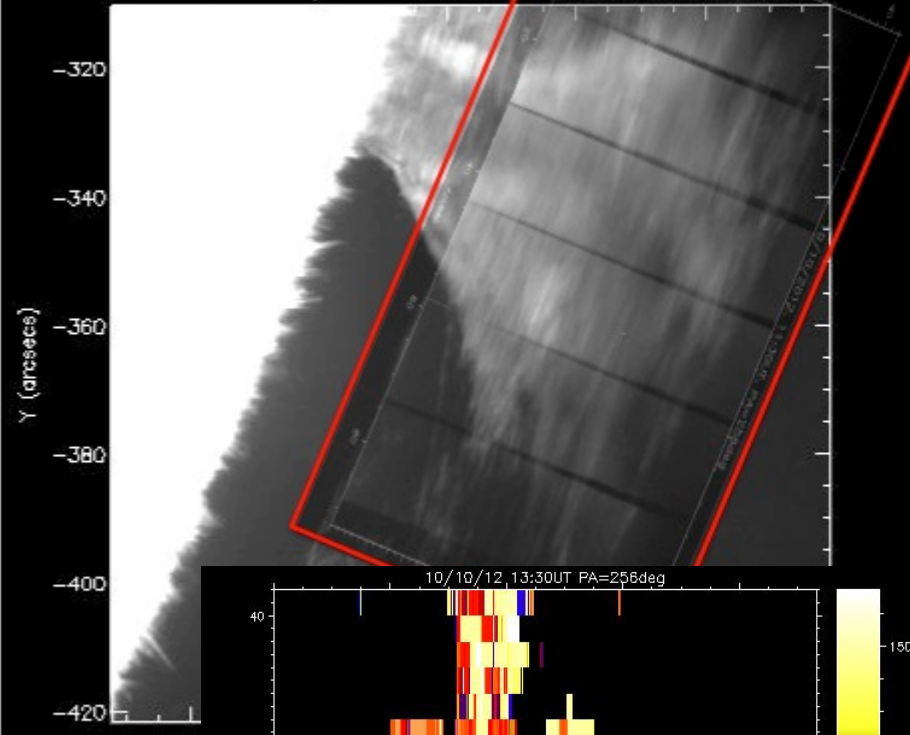




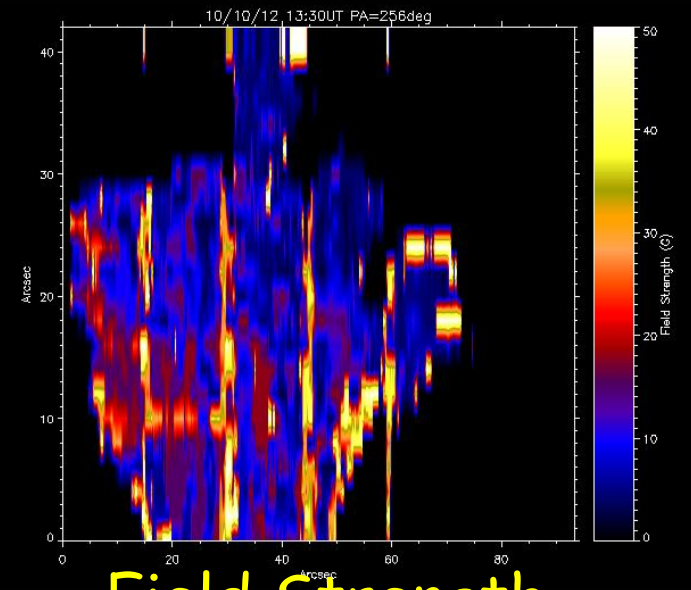
If $\tau = 1.3$



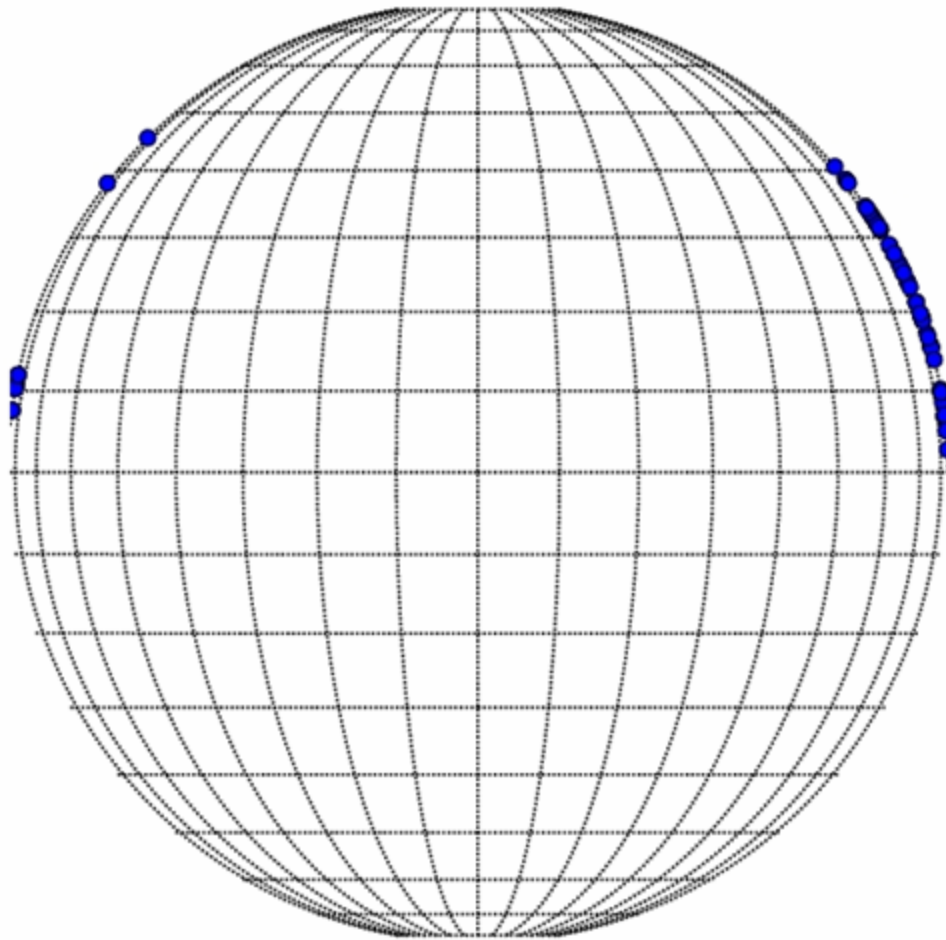
HINODE SOT/WB 10-Oct-2012 14:04:47.098 UT

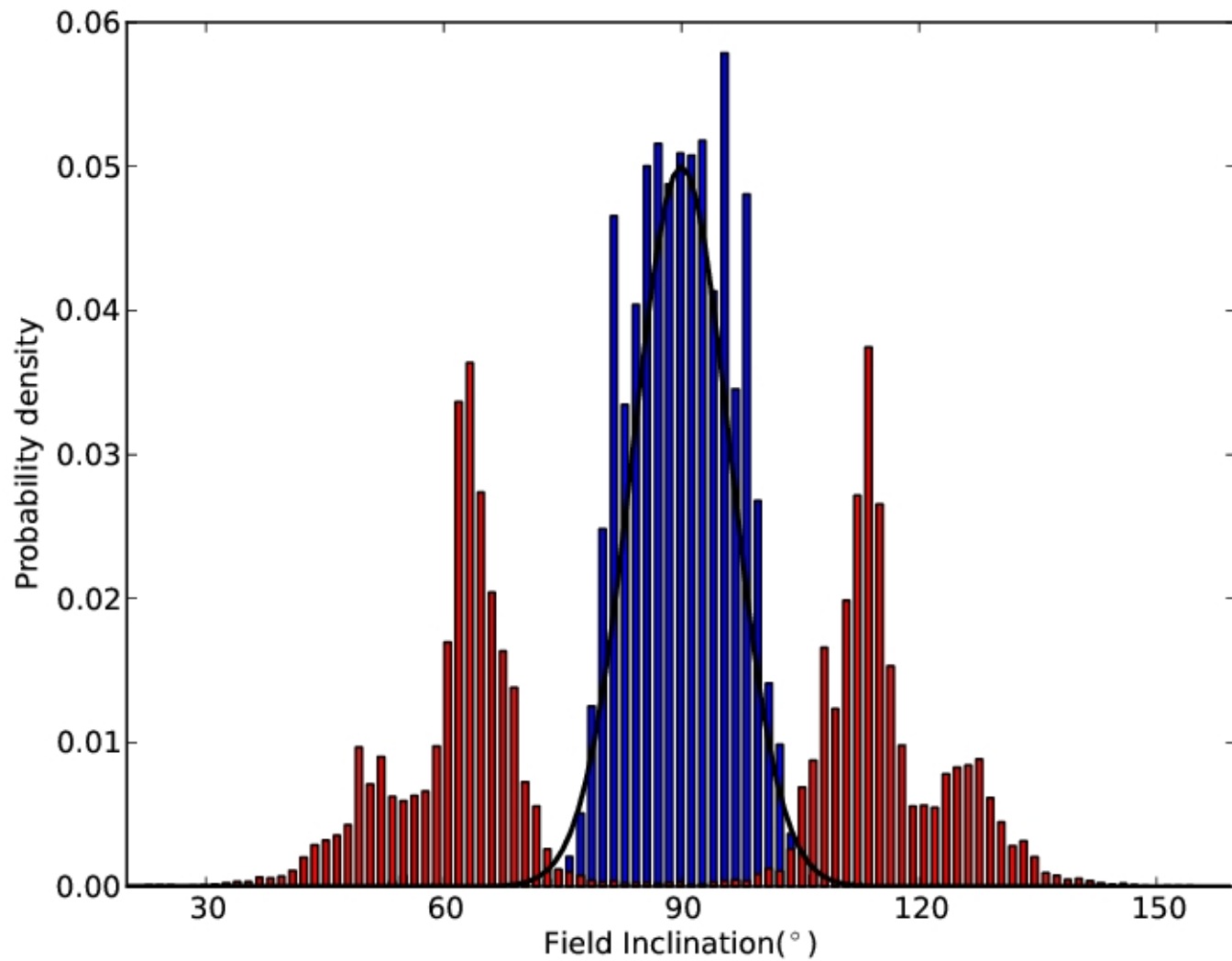


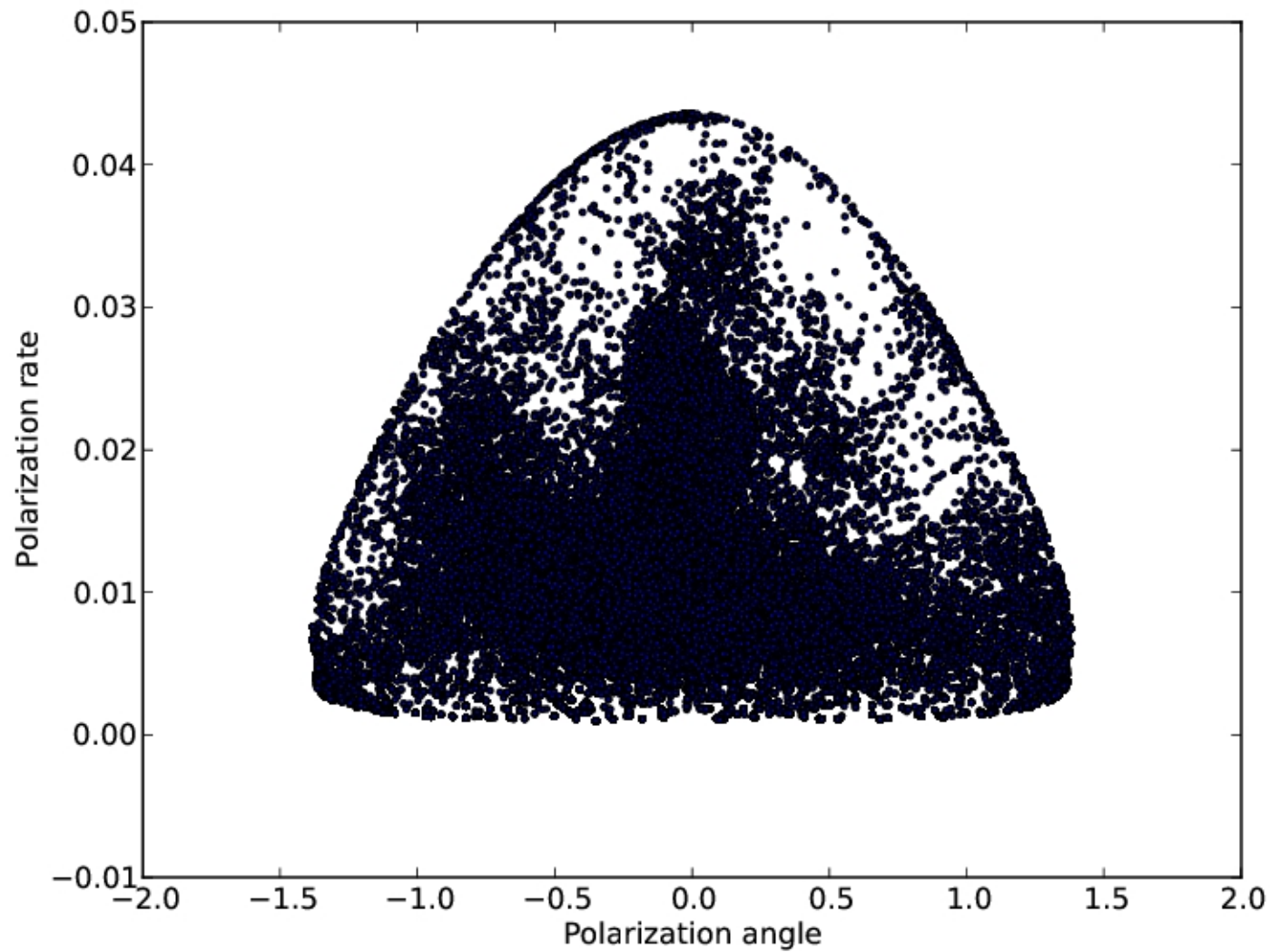
Inclination

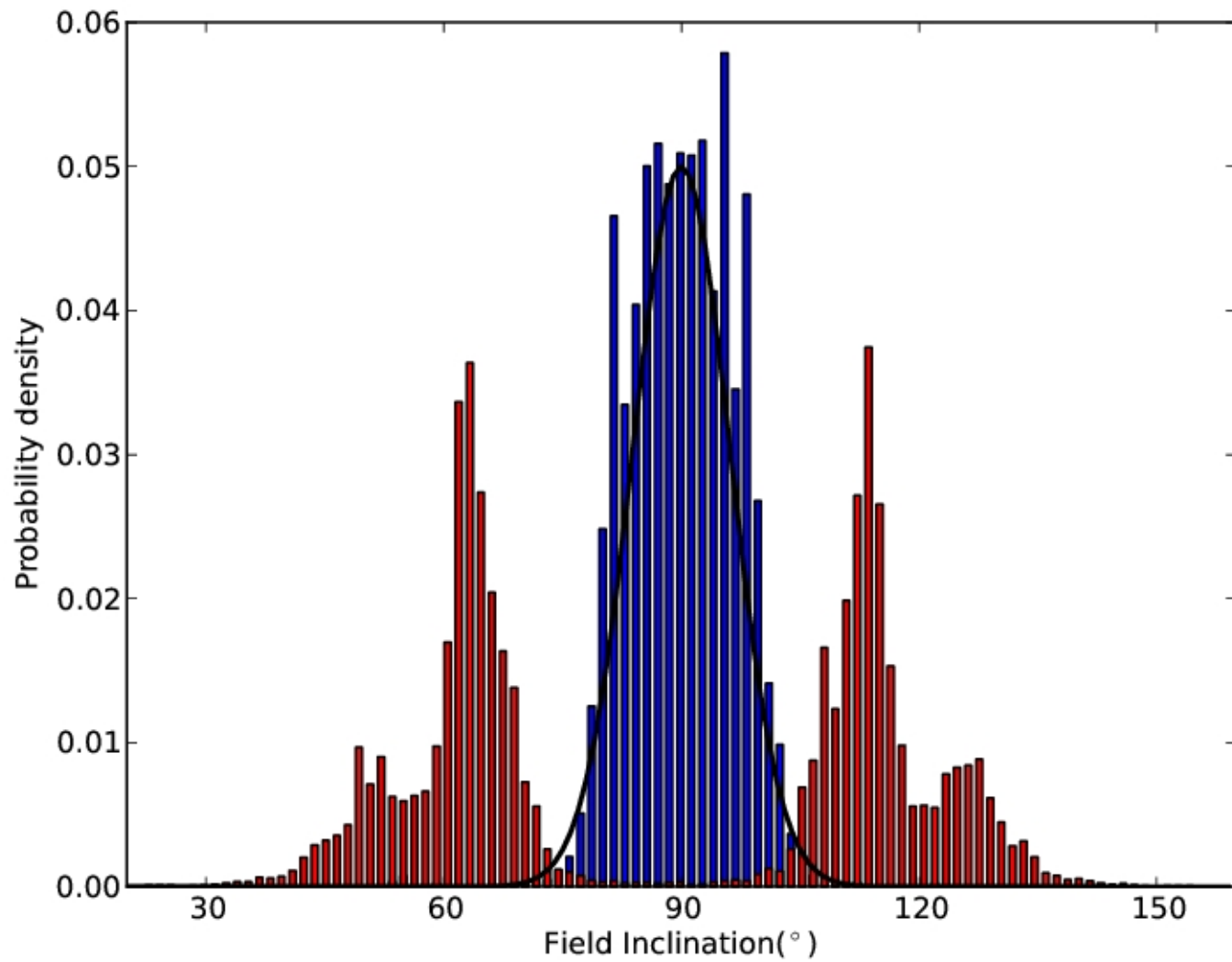


Field Strength

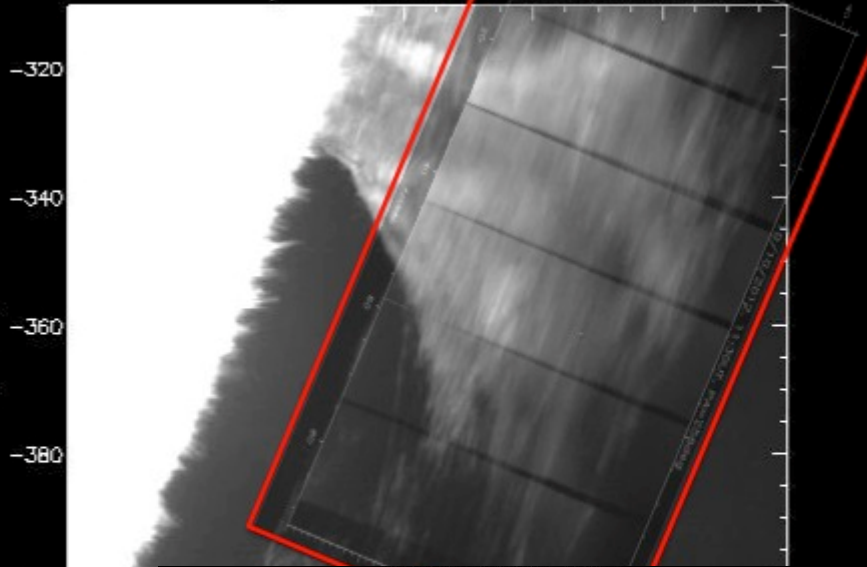




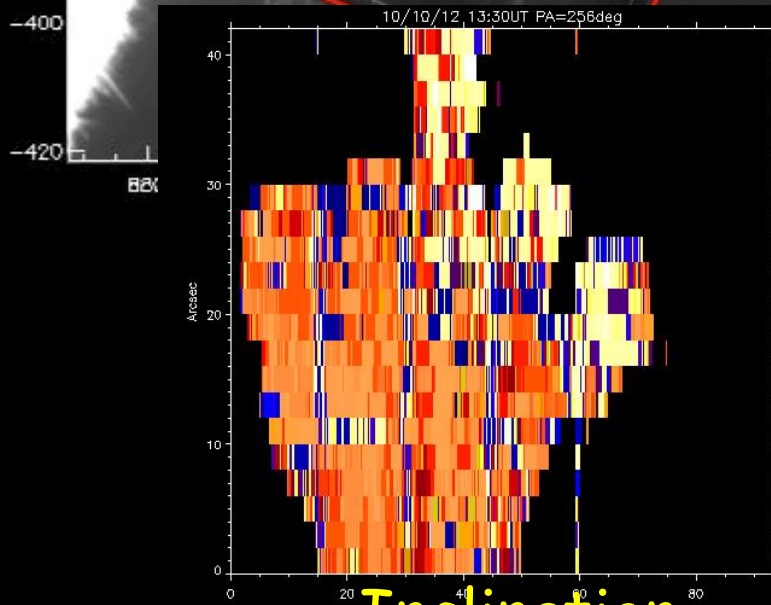
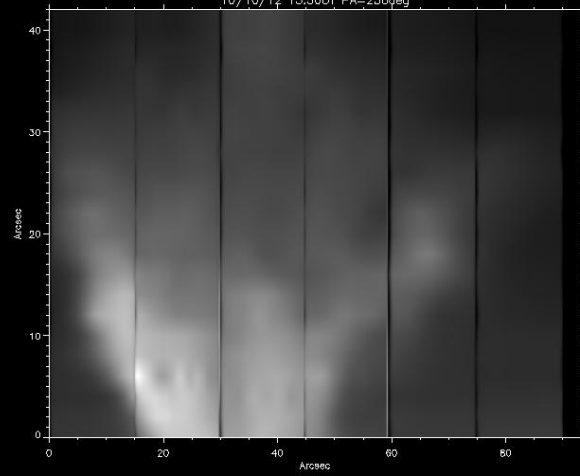




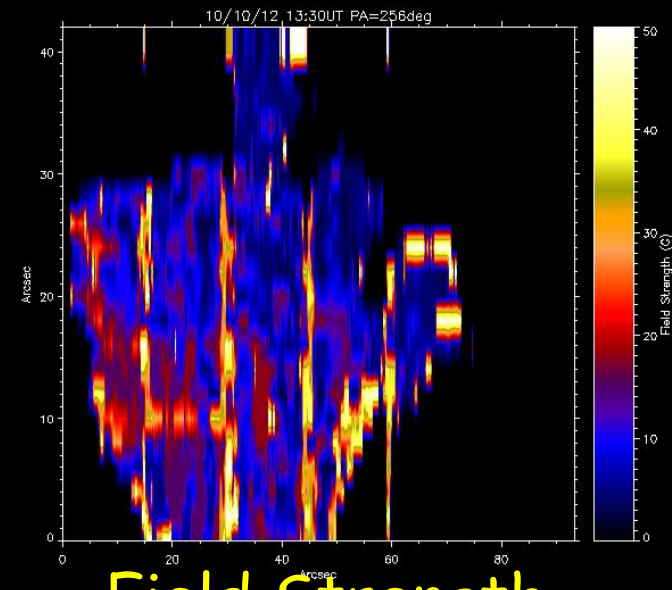
Hinode SOT/WB 10-Oct-2012 14:04:47.098 UT



10/10/12 13:30UT PA=256deg

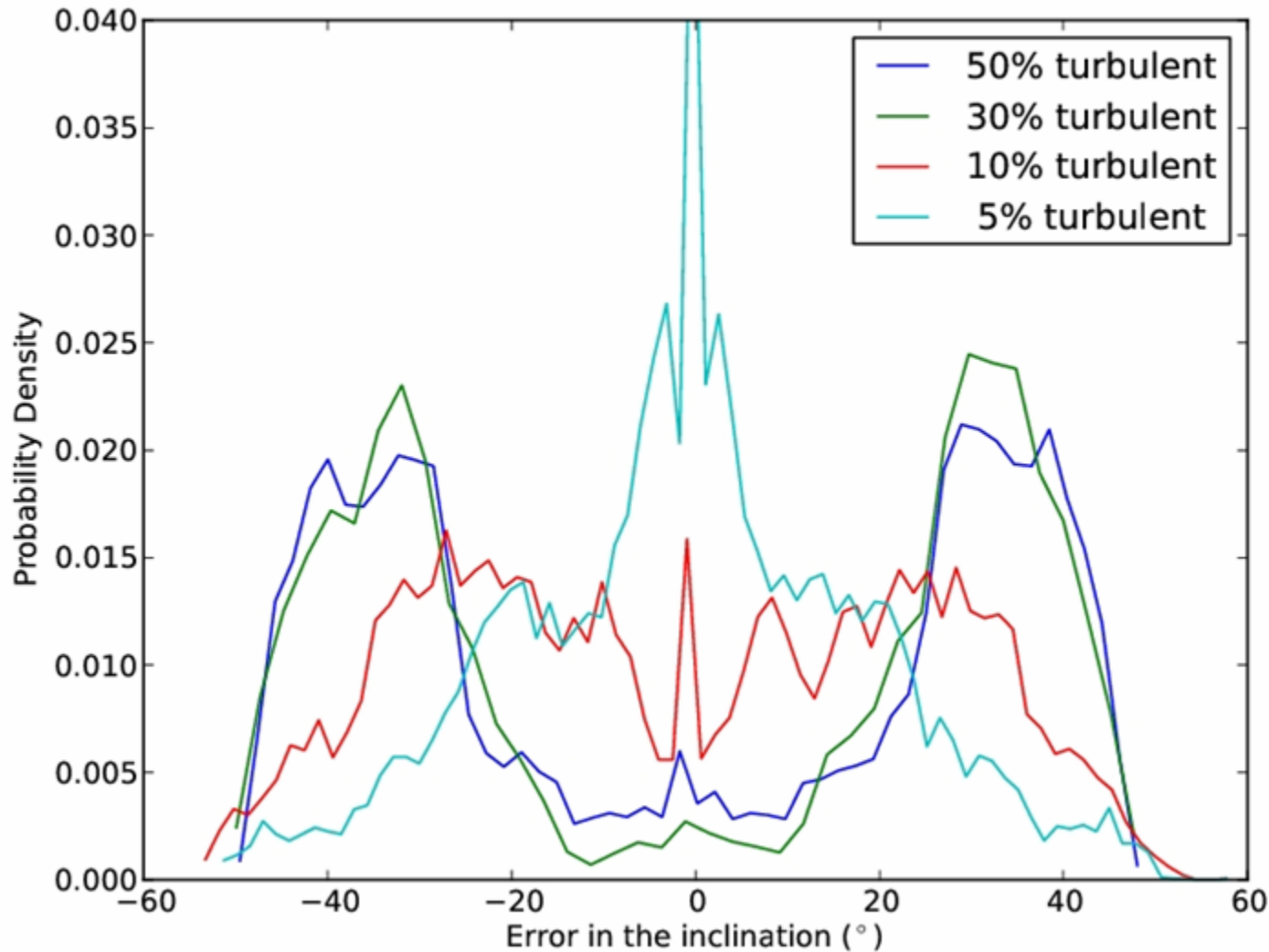


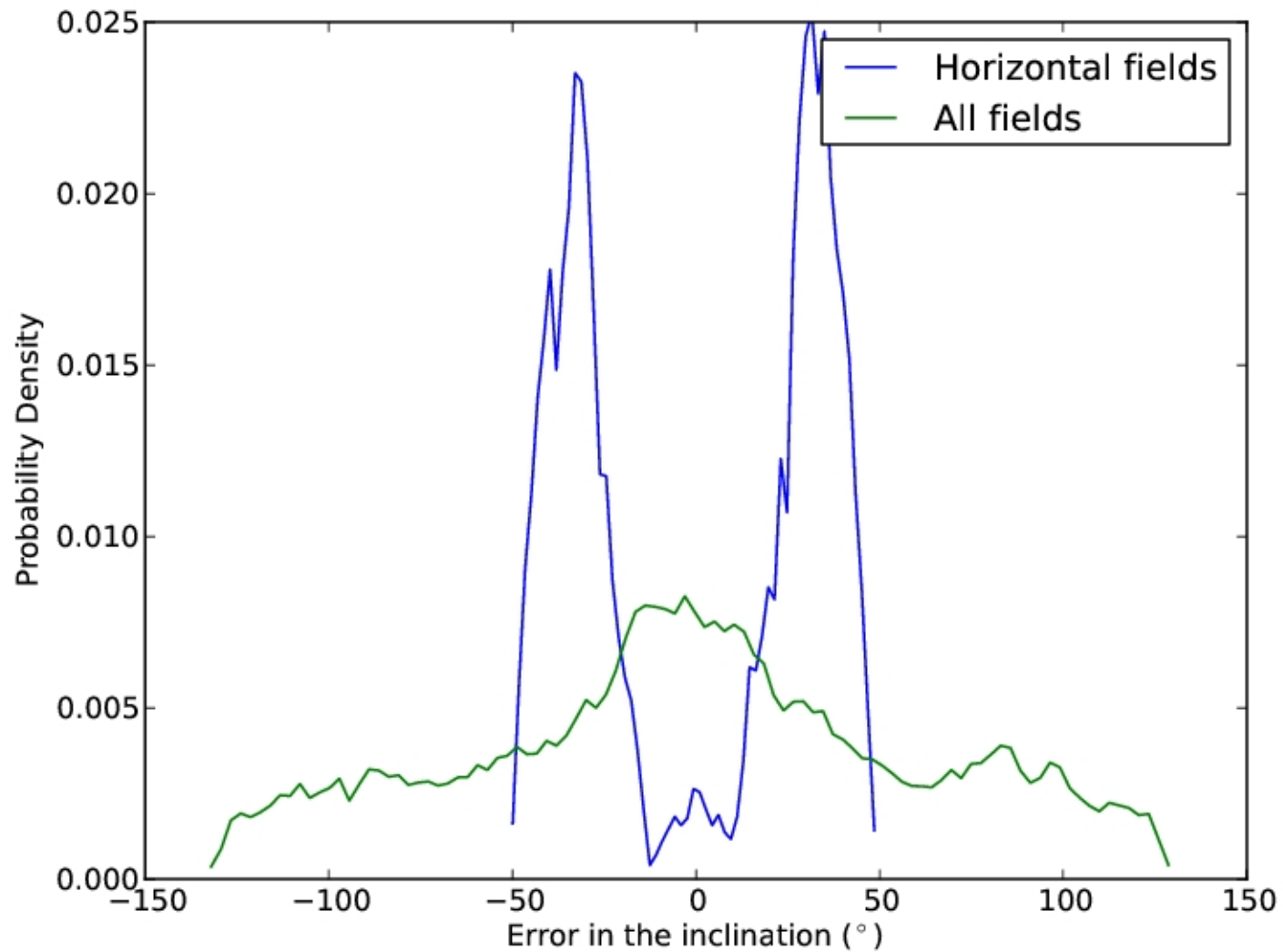
Inclination



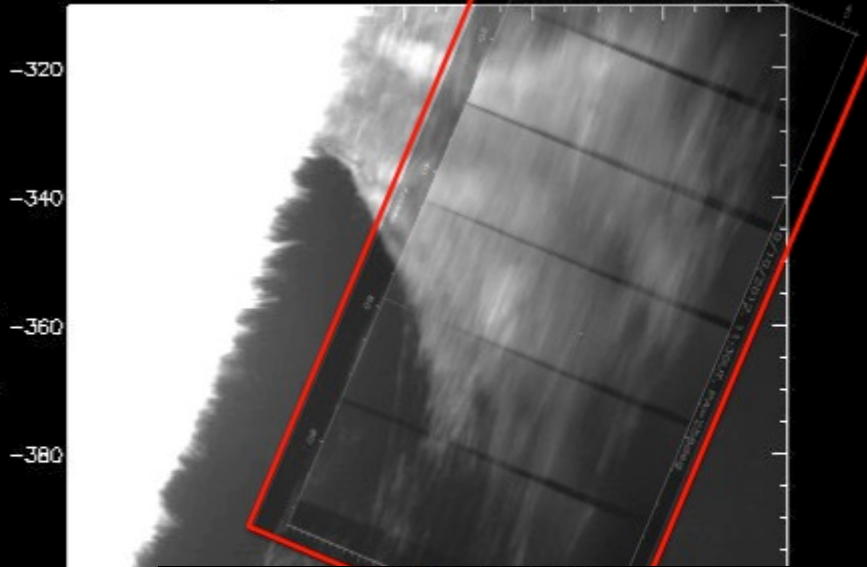
Field Strength

INVERSION RELIES ON MODELS

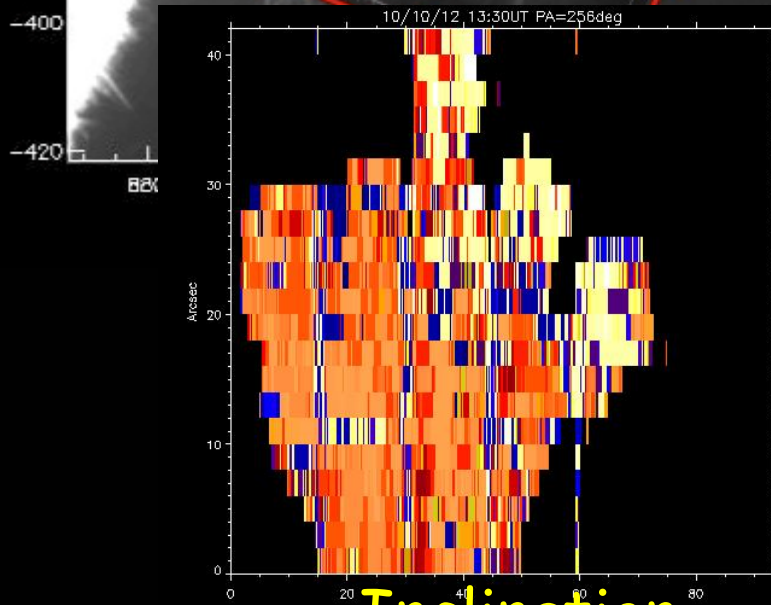
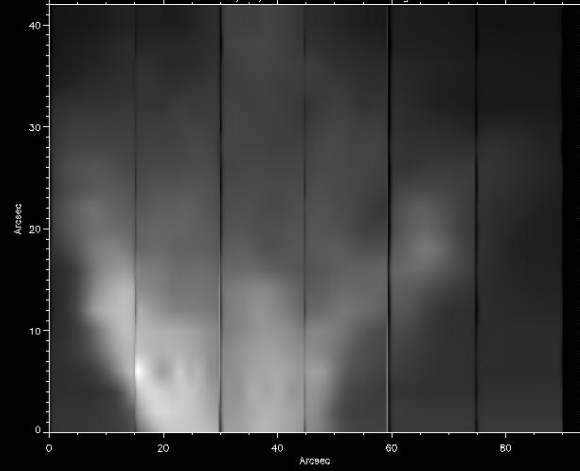




Hinode SOT/WB 10-Oct-2012 14:04:47.098 UT

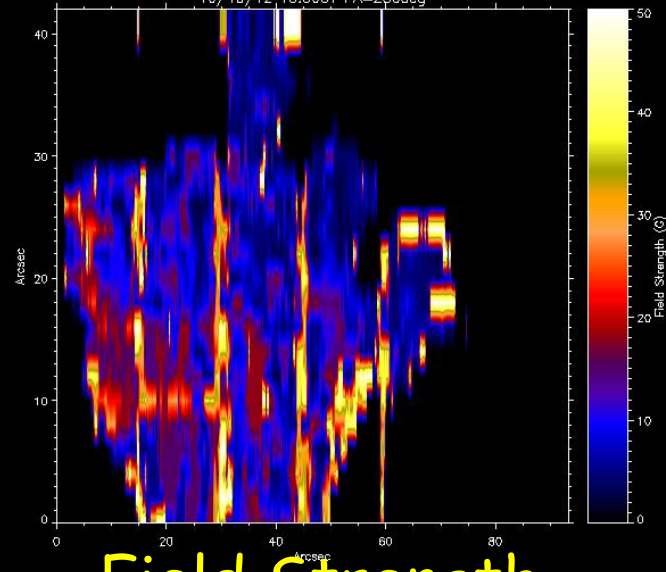


10/10/12 13:30UT PA=256deg



Inclination

10/10/12 13:30UT PA=256deg



Field Strength

